

# Phospho-MLKL (S345) Antibody

Rabbit mAb

Catalog # AP92768

## Product Information

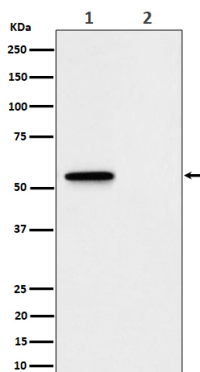
<b>Application</b>	WB, IP
<b>Primary Accession</b>	<a href="#">Q9D2Y4(mouse)Q8NB16(Human)</a>
<b>Reactivity</b>	Mouse
<b>Clonality</b>	Monoclonal
<b>Other Names</b>	hMLKL ; Mixed lineage kinase domain like; Mixed lineage kinase domain like protein; Mixed lineage kinase domain like pseudokinase;
<b>Isotype</b>	Rabbit IgG
<b>Host</b>	Rabbit
<b>Calculated MW</b>	54 KDa

## Additional Information

<b>Dilution</b>	WB 1:500~1:2000 IP 1:50
<b>Purification</b>	Affinity-chromatography
<b>Immunogen</b>	A synthesized peptide derived from human Phospho-MLKL (S345)
<b>Description</b>	Pseudokinase that plays a key role in TNF-induced necroptosis, a programmed cell death process (PubMed:22265413, PubMed:22265414, PubMed:22421439, PubMed:24316671).
<b>Storage Condition and Buffer</b>	Rabbit IgG in phosphate buffered saline , pH 7.4, 150mM NaCl, 0.02% sodium azide and 50% glycerol. Store at +4°C short term. Store at -20°C long term. Avoid freeze / thaw cycle.

## Protein Information

## Images



Western blot analysis of Phospho-MLKL (S345) expression in (1) L929 treated with Z-VAD + TNF alpha + SM164 cell lysate; (2) Untreated.

Please note: All products are 'FOR RESEARCH USE ONLY. NOT FOR USE IN DIAGNOSTIC OR THERAPEUTIC PROCEDURES'.