

DCAF7 Antibody

Rabbit mAb

Catalog # AP92767

Product Information

Application	WB, IHC, FC
Primary Accession	P61962
Reactivity	Human
Clonality	Monoclonal
Other Names	AN11; Dcaf7; HAN11; WDR68;
Isotype	Rabbit IgG
Host	Rabbit
Calculated MW	38926

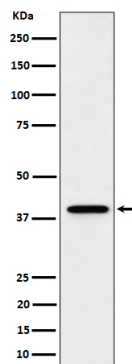
Additional Information

Dilution	WB 1:500~1:2000 IHC 1:50~1:200 FC 1:50
Purification	Affinity-chromatography
Immunogen	A synthesized peptide derived from human DCAF7
Description	Involved in craniofacial development. Acts upstream of the EDN1 pathway and is required for formation of the upper jaw equivalent, the palatoquadrate.
Storage Condition and Buffer	Rabbit IgG in phosphate buffered saline , pH 7.4, 150mM NaCl, 0.02% sodium azide and 50% glycerol. Store at +4°C short term. Store at -20°C long term. Avoid freeze / thaw cycle.

Protein Information

Name	DCAF7
Synonyms	HAN11, WDR68
Function	Involved in craniofacial development. Acts upstream of the EDN1 pathway and is required for formation of the upper jaw equivalent, the palatoquadrate. The activity required for EDN1 pathway function differs between the first and second arches (By similarity). Associates with DIAPH1 and controls GLI1 transcriptional activity. Could be involved in normal and disease skin development. May function as a substrate receptor for CUL4-DDB1 E3 ubiquitin-protein ligase complex.
Cellular Location	Cytoplasm. Nucleus. Note=Overexpression of DIAHP1 or active RHOA causes translocation from the nucleus to cytoplasm

Images



Western blot analysis of DCAF7 expression in HeLa cell lysate.

Please note: All products are 'FOR RESEARCH USE ONLY. NOT FOR USE IN DIAGNOSTIC OR THERAPEUTIC PROCEDURES'.