

AGL Antibody

Rabbit mAb

Catalog # AP92763

Product Information

Application	WB, IHC, IF, FC, ICC, IHF
Primary Accession	P35573
Reactivity	Rat, Human, Mouse
Clonality	Monoclonal
Other Names	AGL; C77197; GDE; Glycogen debrancher;
Isotype	Rabbit IgG
Host	Rabbit
Calculated MW	174764

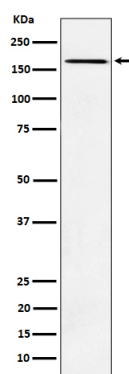
Additional Information

Dilution	WB 1:500~1:2000 IHC 1:50~1:200 ICC/IF 1:50~1:200 FC 1:50
Purification	Affinity-chromatography
Immunogen	A synthesized peptide derived from human AGL
Description	Multifunctional enzyme acting as 1,4-alpha-D-glucan:1,4-alpha-D-glucan 4-alpha-D-glycosyltransferase and amylo-1,6-glucosidase in glycogen degradation.
Storage Condition and Buffer	Rabbit IgG in phosphate buffered saline , pH 7.4, 150mM NaCl, 0.02% sodium azide and 50% glycerol. Store at +4°C short term. Store at -20°C long term. Avoid freeze / thaw cycle.

Protein Information

Name	AGL
Synonyms	GDE
Function	Multifunctional enzyme acting as 1,4-alpha-D-glucan:1,4- alpha-D-glucan 4-alpha-D-glycosyltransferase and amylo-1,6-glucosidase in glycogen degradation.
Cellular Location	Cytoplasm. Note=Under glycogenolytic conditions localizes to the nucleus
Tissue Location	Liver, kidney and lymphoblastoid cells express predominantly isoform 1; whereas muscle and heart express not only isoform 1, but also muscle-specific isoform mRNAs (isoforms 2, 3 and 4). Isoforms 5 and 6 are present in both liver and muscle

Images



Western blot analysis of AGL expression in K562 cell lysate.

Please note: All products are 'FOR RESEARCH USE ONLY. NOT FOR USE IN DIAGNOSTIC OR THERAPEUTIC PROCEDURES'.