

# TTF1 Antibody

Rabbit mAb

Catalog # AP92762

## Product Information

<b>Application</b>	WB, IHC
<b>Primary Accession</b>	<a href="#">P43699</a>
<b>Reactivity</b>	Rat, Human, Mouse
<b>Clonality</b>	Monoclonal
<b>Other Names</b>	BCH; BHC; NK2; NKX2.1; NKX2A; TEBP; Thyroid nuclear factor 1; Tinman; TITF1; TTF1;
<b>Isotype</b>	Rabbit IgG
<b>Host</b>	Rabbit
<b>Calculated MW</b>	38596

## Additional Information

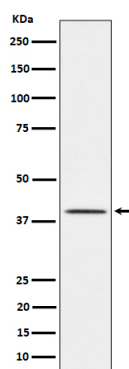
<b>Dilution</b>	WB 1:500~1:2000 IHC 1:50~1:200
<b>Purification</b>	Affinity-chromatography
<b>Immunogen</b>	A synthesized peptide derived from human TTF1
<b>Description</b>	Transcription factor that binds and activates the promoter of thyroid specific genes such as thyroglobulin, thyroperoxidase, and thyrotropin receptor.
<b>Storage Condition and Buffer</b>	Rabbit IgG in phosphate buffered saline , pH 7.4, 150mM NaCl, 0.02% sodium azide and 50% glycerol. Store at +4°C short term. Store at -20°C long term. Avoid freeze / thaw cycle.

## Protein Information

<b>Name</b>	NKX2-1 ( <a href="#">HGNC:11825</a> )
<b>Synonyms</b>	NKX2A, TITF1, TTF1
<b>Function</b>	Transcription factor that binds and activates the promoter of thyroid specific genes such as thyroglobulin, thyroperoxidase, and thyrotropin receptor. Crucial in the maintenance of the thyroid differentiation phenotype. May play a role in lung development and surfactant homeostasis. Forms a regulatory loop with GRHL2 that coordinates lung epithelial cell morphogenesis and differentiation. Activates the transcription of GNRHR and plays a role in enhancing the circadian oscillation of its gene expression. Represses the transcription of the circadian transcriptional repressor NR1D1 (By similarity).
<b>Cellular Location</b>	Nucleus {ECO:0000250 UniProtKB:P50220}.
<b>Tissue Location</b>	Thyroid and lung.

## Images

---



Western blot analysis of TTF1 expression in Rat lung cell lysate.

Please note: All products are 'FOR RESEARCH USE ONLY. NOT FOR USE IN DIAGNOSTIC OR THERAPEUTIC PROCEDURES'.