

CLPTM1 Antibody

Rabbit mAb

Catalog # AP92760

Product Information

Application	WB, IHC, IF, FC, ICC, IHF
Primary Accession	O96005
Reactivity	Human
Clonality	Monoclonal
Other Names	HS9; N14;
Isotype	Rabbit IgG
Host	Rabbit
Calculated MW	76097

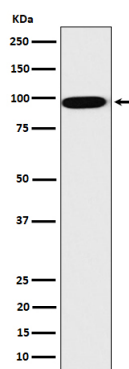
Additional Information

Dilution	WB 1:500~1:2000 IHC 1:50~1:200 ICC/IF 1:50~1:200 FC 1:50
Purification	Affinity-chromatography
Immunogen	A synthesized peptide derived from human CLPTM1
Description	CLPTM1 may play a role in T-cell development. A chromosomal translocation involving CLPTM1 is found in a family with cleft lip and palate.
Storage Condition and Buffer	Rabbit IgG in phosphate buffered saline , pH 7.4, 150mM NaCl, 0.02% sodium azide and 50% glycerol. Store at +4°C short term. Store at -20°C long term. Avoid freeze / thaw cycle.

Protein Information

Name	CLPTM1
Function	Involved in GABAergic but not glutamatergic transmission. Binds and traps GABAA receptors in the endoplasmic reticulum (ER). Modulates postsynaptic GABAergic transmission, and therefore inhibitory neurotransmission, by reducing the plasma membrane expression of these receptors. Altered GABAergic signaling is one among many causes of cleft palate (By similarity). Might function as a lipid scramblase, translocating lipids in membranes from one leaflet to the other one (By similarity). Required for efficient glycosylphosphatidylinositol (GPI) inositol deacylation in the ER, which is a crucial step to switch GPI- anchored proteins (GPI-APs) from protein folding to transport states (PubMed: 29255114). May play a role in T-cell development (By similarity).
Cellular Location	Membrane; Multi-pass membrane protein
Tissue Location	Widely expressed..

Images



Western blot analysis of CLPTM1 expression in HepG2 cell lysate.

Please note: All products are 'FOR RESEARCH USE ONLY. NOT FOR USE IN DIAGNOSTIC OR THERAPEUTIC PROCEDURES'.