

C21orf29 Antibody (Center)

Affinity Purified Rabbit Polyclonal Antibody (Pab)

Catalog # AP9275c

Product Information

| | |
|--------------------------|------------------------|
| Application | IHC-P, FC, WB, E |
| Primary Accession | Q8WU66 |
| Reactivity | Human |
| Host | Rabbit |
| Clonality | Polyclonal |
| Isotype | Rabbit IgG |
| Clone Names | RB23103 |
| Calculated MW | 74924 |
| Antigen Region | 293-320 |

Additional Information

| | |
|---------------------------|--|
| Gene ID | 54084 |
| Other Names | Thrombospondin-type laminin G domain and EAR repeat-containing protein, TSP-EAR, TSPEAR, C21orf29 |
| Target/Specificity | This C21orf29 antibody is generated from rabbits immunized with a KLH conjugated synthetic peptide between 293-320 amino acids from the Central region of human C21orf29. |
| Dilution | IHC-P~~1:100~500 FC~~1:10~50 WB~~1:1000 E~~Use at an assay dependent concentration. |
| Format | Purified polyclonal antibody supplied in PBS with 0.09% (W/V) sodium azide. This antibody is purified through a protein A column, followed by peptide affinity purification. |
| Storage | Maintain refrigerated at 2-8°C for up to 2 weeks. For long term storage store at -20°C in small aliquots to prevent freeze-thaw cycles. |
| Precautions | C21orf29 Antibody (Center) is for research use only and not for use in diagnostic or therapeutic procedures. |

Protein Information

| | |
|-----------------|--|
| Name | TSPEAR |
| Synonyms | C21orf29 |
| Function | Plays a critical role in tooth and hair follicle morphogenesis through |

regulation of the Notch signaling pathway (PubMed:[27736875](#)). May play a role in development or function of the auditory system (PubMed:[22678063](#)).

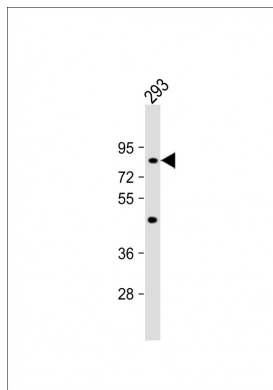
Cellular Location

Secreted {ECO:0000250|UniProtKB:J3S6Y1}. Cell surface {ECO:0000250|UniProtKB:J3S6Y1}. Cell projection, stereocilium {ECO:0000250|UniProtKB:J3S6Y1}. Note=Secreted protein which may bind to the cell surface via a membrane receptor {ECO:0000250|UniProtKB:J3S6Y1}

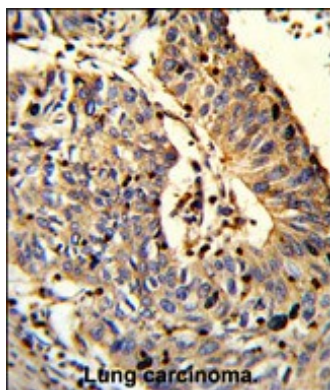
References

Scheel,H., et.al., Hum. Mol. Genet. 11 (15), 1757-1762 (2002)

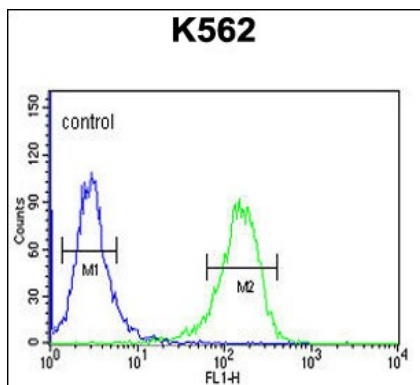
Images



Anti-C21orf29 Antibody (Center) at 1:1000 dilution + 293 whole cell lysate Lysates/proteins at 20 µg per lane. Secondary Goat Anti-Rabbit IgG, (H+L), Peroxidase conjugated at 1/10000 dilution. Predicted band size : 75 kDa Blocking/Dilution buffer: 5% NFDM/TBST.



Formalin-fixed and paraffin-embedded human Lung carcinoma reacted with C21orf29 Antibody (Center), which was peroxidase-conjugated to the secondary antibody, followed by DAB staining. This data demonstrates the use of this antibody for immunohistochemistry; clinical relevance has not been evaluated.



C21orf29 Antibody (Center) (Cat. #AP9275c) flow cytometric analysis of K562 cells (right histogram) compared to a negative control cell (left histogram).FITC-conjugated goat-anti-rabbit secondary antibodies were used for the analysis.

Citations

- [Defect in the gene encoding the EAR/EPTP domain-containing protein TSPEAR causes DFNB98 profound deafness.](#)

Please note: All products are 'FOR RESEARCH USE ONLY. NOT FOR USE IN DIAGNOSTIC OR THERAPEUTIC PROCEDURES'.