

CAP1 Antibody

Rabbit mAb

Catalog # AP92754

Product Information

Application	WB, IHC, IF, ICC, IHF
Primary Accession	Q01518
Reactivity	Human
Clonality	Monoclonal
Other Names	CAP1; CAP1 PEN;
Isotype	Rabbit IgG
Host	Rabbit
Calculated MW	51901

Additional Information

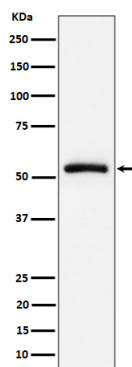
Dilution	WB 1:500~1:2000 IHC 1:50~1:200 ICC/IF 1:50~1:200
Purification	Affinity-chromatography
Immunogen	A synthesized peptide derived from human CAP1
Description	Directly regulates filament dynamics and has been implicated in a number of complex developmental and morphological processes, including mRNA localization and the establishment of cell polarity.
Storage Condition and Buffer	Rabbit IgG in phosphate buffered saline , pH 7.4, 150mM NaCl, 0.02% sodium azide and 50% glycerol. Store at +4°C short term. Store at -20°C long term. Avoid freeze / thaw cycle.

Protein Information

Name	CAP1
Synonyms	CAP
Function	Directly regulates filament dynamics and has been implicated in a number of complex developmental and morphological processes, including mRNA localization and the establishment of cell polarity.
Cellular Location	Cell membrane; Peripheral membrane protein

Images

Western blot analysis of CAP1 expression in Raji cell lysate.



Please note: All products are 'FOR RESEARCH USE ONLY. NOT FOR USE IN DIAGNOSTIC OR THERAPEUTIC PROCEDURES'.