

CNTN4 Antibody

Rabbit mAb

Catalog # AP92750

Product Information

Application	WB, IHC
Primary Accession	Q8IWW2
Reactivity	Human
Clonality	Monoclonal
Other Names	AXCAM; BIG 2; Cntn4; CNTN4A; contactin 4; SCA16;
Isotype	Rabbit IgG
Host	Rabbit
Calculated MW	113454

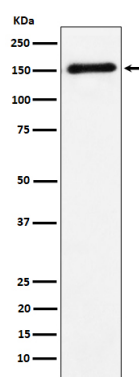
Additional Information

Dilution	WB 1:500~1:2000 IHC 1:50~1:200
Purification	Affinity-chromatography
Immunogen	A synthesized peptide derived from human CNTN4
Description	Contactins mediate cell surface interactions during nervous system development. Has some neurite outgrowth-promoting activity. May be involved in synaptogenesis.
Storage Condition and Buffer	Rabbit IgG in phosphate buffered saline , pH 7.4, 150mM NaCl, 0.02% sodium azide and 50% glycerol. Store at +4°C short term. Store at -20°C long term. Avoid freeze / thaw cycle.

Protein Information

Name	CNTN4
Function	Contactins mediate cell surface interactions during nervous system development. Has some neurite outgrowth-promoting activity. May be involved in synaptogenesis.
Cellular Location	Cell membrane; Lipid-anchor, GPI-anchor. Secreted
Tissue Location	Mainly expressed in brain. Highly expressed in cerebellum and weakly expressed in corpus callosum, caudate nucleus, amygdala and spinal cord. Also expressed in testis, pancreas, thyroid, uterus, small intestine and kidney. Not expressed in skeletal muscle Isoform 2 is weakly expressed in cerebral cortex

Images



Western blot analysis of CNTN4 expression in Human cerebellum cell lysate.

Please note: All products are 'FOR RESEARCH USE ONLY. NOT FOR USE IN DIAGNOSTIC OR THERAPEUTIC PROCEDURES'.