

LTB4R Antibody

Rabbit mAb

Catalog # AP92727

Product Information

| | |
|--------------------------|---|
| Application | WB, IHC |
| Primary Accession | Q15722 |
| Reactivity | Human |
| Clonality | Monoclonal |
| Other Names | BLT; BLT1; BLTR; CMKRL1; GPR16; LTB4R1; LTBR1; P2RY7; P2Y7; |
| Isotype | Rabbit IgG |
| Host | Rabbit |
| Calculated MW | 37557 |

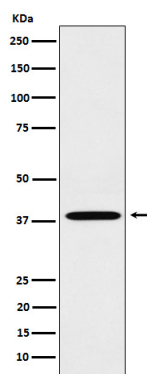
Additional Information

| | |
|-------------------------------------|---|
| Dilution | WB 1:500~1:2000 IHC 1:50~1:200 |
| Purification | Affinity-chromatography |
| Immunogen | A synthesized peptide derived from human LTB4R |
| Description | Receptor for extracellular ATP > UTP and ADP. The activity of this receptor is mediated by G proteins which activate a phosphatidylinositol-calcium second messenger system. |
| Storage Condition and Buffer | Rabbit IgG in phosphate buffered saline , pH 7.4, 150mM NaCl, 0.02% sodium azide and 50% glycerol. Store at +4°C short term. Store at -20°C long term. Avoid freeze / thaw cycle. |

Protein Information

| | |
|--------------------------|---|
| Name | LTB4R |
| Synonyms | BLT, BLT1, BLTR, CMKRL1, GPR16, P2RY7 |
| Function | Receptor for extracellular ATP > UTP and ADP. The activity of this receptor is mediated by G proteins which activate a phosphatidylinositol-calcium second messenger system. May be the cardiac P2Y receptor involved in the regulation of cardiac muscle contraction through modulation of L-type calcium currents. Is a receptor for leukotriene B4, a potent chemoattractant involved in inflammation and immune response. |
| Cellular Location | Cell membrane; Multi-pass membrane protein. |
| Tissue Location | Expressed at highest levels in heart, skeletal muscle and at lower levels in brain and liver. High level of expression in lymphoid tissues |

Images



Western blot analysis of LTB₄R expression in A549 cell lysate.

Please note: All products are 'FOR RESEARCH USE ONLY. NOT FOR USE IN DIAGNOSTIC OR THERAPEUTIC PROCEDURES'.