

HLA DMB Antibody

Rabbit mAb

Catalog # AP92725

Product Information

Application	WB, FC
Primary Accession	P28068
Reactivity	Human
Clonality	Monoclonal
Other Names	DMB; RING7;
Isotype	Rabbit IgG
Host	Rabbit
Calculated MW	28931

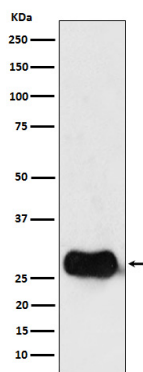
Additional Information

Dilution	WB 1:500~1:2000 FC 1:50
Purification	Affinity-chromatography
Immunogen	A synthesized peptide derived from human HLA DMB
Description	HLA-DMB belongs to the HLA class II beta chain paralogues. This class II molecule is a heterodimer consisting of an alpha (DMA) and a beta (DMB) chain, both anchored in the membrane.
Storage Condition and Buffer	Rabbit IgG in phosphate buffered saline , pH 7.4, 150mM NaCl, 0.02% sodium azide and 50% glycerol. Store at +4°C short term. Store at -20°C long term. Avoid freeze / thaw cycle.

Protein Information

Name	HLA-DMB
Synonyms	DMB, RING7
Function	Plays a critical role in catalyzing the release of class II- associated invariant chain peptide (CLIP) from newly synthesized MHC class II molecules and freeing the peptide binding site for acquisition of antigenic peptides. In B-cells, the interaction between HLA-DM and MHC class II molecules is regulated by HLA-DO.
Cellular Location	Late endosome membrane; Single-pass type I membrane protein. Lysosome membrane; Single-pass type I membrane protein. Note=Localizes to late endocytic compartment. Associates with lysosome membranes

Images



Western blot analysis of HLA DMB expression in Raji cell lysate.

Please note: All products are 'FOR RESEARCH USE ONLY. NOT FOR USE IN DIAGNOSTIC OR THERAPEUTIC PROCEDURES'.