

HFE Antibody

Rabbit mAb

Catalog # AP92724

Product Information

Application	WB
Primary Accession	Q30201
Reactivity	Human
Clonality	Monoclonal
Other Names	Hemochromatosis; HFE; HFE1; HLAH; MVCD7; TFQTL2;
Isotype	Rabbit IgG
Host	Rabbit
Calculated MW	40108

Additional Information

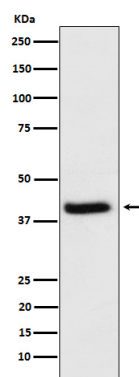
Dilution	WB 1:500~1:2000
Purification	Affinity-chromatography
Immunogen	A synthesized peptide derived from human HFE
Description	Binds to transferrin receptor (TFR) and reduces its affinity for iron-loaded transferrin.
Storage Condition and Buffer	Rabbit IgG in phosphate buffered saline , pH 7.4, 150mM NaCl, 0.02% sodium azide and 50% glycerol. Store at +4°C short term. Store at -20°C long term. Avoid freeze / thaw cycle.

Protein Information

Name	HFE
Synonyms	HLAH
Function	Binds to transferrin receptor (TFR) and reduces its affinity for iron-loaded transferrin.
Cellular Location	Cell membrane; Single-pass type I membrane protein
Tissue Location	Expressed in all tissues tested except brain.

Images

Western blot analysis of HFE expression in HeLa cell lysate.



Please note: All products are 'FOR RESEARCH USE ONLY. NOT FOR USE IN DIAGNOSTIC OR THERAPEUTIC PROCEDURES'.