

MGST1 Antibody

Rabbit mAb

Catalog # AP92720

Product Information

Application	WB, IHC, IF, FC, ICC, IHF
Primary Accession	P10620
Reactivity	Rat, Human, Mouse
Clonality	Monoclonal
Other Names	MGST1; GST12; MGST; MGST I; MGST1;
Isotype	Rabbit IgG
Host	Rabbit
Calculated MW	17599

Additional Information

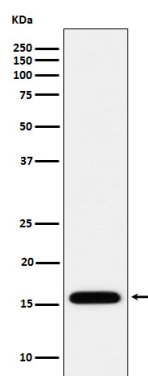
Dilution	WB 1:500~1:2000 IHC 1:50~1:200 ICC/IF 1:50~1:200 FC 1:50
Purification	Affinity-chromatography
Immunogen	A synthesized peptide derived from human MGST1
Description	Conjugation of reduced glutathione to a wide number of exogenous and endogenous hydrophobic electrophiles. Has a wide substrate specificity.
Storage Condition and Buffer	Rabbit IgG in phosphate buffered saline , pH 7.4, 150mM NaCl, 0.02% sodium azide and 50% glycerol. Store at +4°C short term. Store at -20°C long term. Avoid freeze / thaw cycle.

Protein Information

Name	MGST1
Synonyms	GST12, MGST
Function	Conjugation of reduced glutathione to a wide number of exogenous and endogenous hydrophobic electrophiles.
Cellular Location	Endoplasmic reticulum membrane {ECO:0000250 UniProtKB:P08011}; Multi-pass membrane protein. Mitochondrion outer membrane {ECO:0000250 UniProtKB:P08011}
Tissue Location	Highly expressed in liver.

Images

Western blot analysis of MGST1 expression in HepG2 cell lysate.



Please note: All products are 'FOR RESEARCH USE ONLY. NOT FOR USE IN DIAGNOSTIC OR THERAPEUTIC PROCEDURES'.