

CaMKII Antibody

Rabbit mAb

Catalog # AP92708

Product Information

Application	WB, FC
Primary Accession	Q9UQM7/Q13554/Q13555/Q13557
Reactivity	Rat, Human, Mouse
Clonality	Monoclonal
Other Names	Calcium/calmodulin dependent protein kinase II alpha; Calcium/calmodulin dependent protein kinase II beta; Calcium/calmodulin dependent protein kinase II delta; Calcium/calmodulin dependent protein kinase II gamma; CaM kinase II alpha; CaM kinase II; CaM kinase II beta; CaM kinase II delta; CaM kinase II gamma; CAMK2; Camk2a; CAMK2B; CAMK2D; CAMK2G; CAMKA;
Isotype	Rabbit IgG
Host	Rabbit
Calculated MW	50 KDa

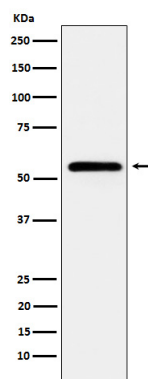
Additional Information

Dilution	WB 1:500~1:2000 FC 1:50
Purification	Affinity-chromatography
Immunogen	A synthesized peptide derived from human CaMKII
Description	CaM-kinase II (CAMK2) is a prominent kinase in the central nervous system that may function in long-term potentiation and neurotransmitter release. Member of the NMDAR signaling complex in excitatory synapses it may regulate NMDAR-dependent potentiation of the AMPAR and synaptic plasticity.
Storage Condition and Buffer	Rabbit IgG in phosphate buffered saline , pH 7.4, 150mM NaCl, 0.02% sodium azide and 50% glycerol. Store at +4°C short term. Store at -20°C long term. Avoid freeze / thaw cycle.

Protein Information

Images

Western blot analysis of CaMKII expression in HeLa cell lysate.



Please note: All products are 'FOR RESEARCH USE ONLY. NOT FOR USE IN DIAGNOSTIC OR THERAPEUTIC PROCEDURES'.