

CRMP3 Antibody

Rabbit mAb

Catalog # AP92691

Product Information

Application	WB
Primary Accession	O14531
Reactivity	Rat, Human, Mouse
Clonality	Monoclonal
Other Names	CRMP3; DPYSL4; DRP4; ULIP4;
Isotype	Rabbit IgG
Host	Rabbit
Calculated MW	61878

Additional Information

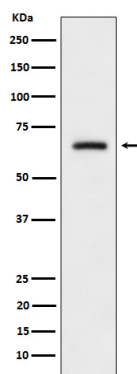
Dilution	WB 1:500~1:2000
Purification	Affinity-chromatography
Immunogen	A synthesized peptide derived from human CRMP3
Description	Necessary for signaling by class 3 semaphorins and subsequent remodeling of the cytoskeleton. Plays a role in axon guidance, neuronal growth cone collapse and cell migration.
Storage Condition and Buffer	Rabbit IgG in phosphate buffered saline , pH 7.4, 150mM NaCl, 0.02% sodium azide and 50% glycerol. Store at +4°C short term. Store at -20°C long term. Avoid freeze / thaw cycle.

Protein Information

Name	DPYSL4
Synonyms	CRMP3, ULIP4
Function	Necessary for signaling by class 3 semaphorins and subsequent remodeling of the cytoskeleton. Plays a role in axon guidance, neuronal growth cone collapse and cell migration (By similarity).
Cellular Location	Cytoplasm.

Images

Western blot analysis of CRMP3 expression in SH-SY5Y cell lysate.



Please note: All products are 'FOR RESEARCH USE ONLY. NOT FOR USE IN DIAGNOSTIC OR THERAPEUTIC PROCEDURES'.