

Kappa light chain Antibody

Rabbit mAb

Catalog # AP92688

Product Information

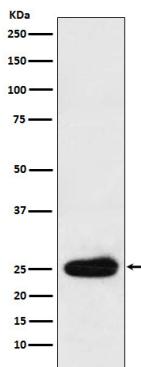
Application	WB, IHC, IF, ICC, IHF
Primary Accession	P01601/P01834
Reactivity	Human
Clonality	Monoclonal
Other Names	HCAK1; IGKC; IGKCD;
Isotype	Rabbit IgG
Host	Rabbit
Calculated MW	25 KDa

Additional Information

Dilution	WB 1:500~1:2000 IHC 1:50~1:200 ICC/IF 1:50~1:200
Purification	Affinity-chromatography
Immunogen	A synthesized peptide derived from human Kappa light chain
Description	V region of the variable domain of immunoglobulin light chains that participates in the antigen recognition (PubMed:24600447). Immunoglobulins, also known as antibodies, are membrane-bound or secreted glycoproteins produced by B lymphocytes.
Storage Condition and Buffer	Rabbit IgG in phosphate buffered saline , pH 7.4, 150mM NaCl, 0.02% sodium azide and 50% glycerol. Store at +4°C short term. Store at -20°C long term. Avoid freeze / thaw cycle.

Protein Information

Images



Western blot analysis of Kappa light chain expression in Human plasma cell lysate.

Please note: All products are 'FOR RESEARCH USE ONLY. NOT FOR USE IN DIAGNOSTIC OR THERAPEUTIC PROCEDURES'.