

CCL27 Antibody

Rabbit mAb

Catalog # AP92680

Product Information

Application	WB, IF, FC, ICC
Primary Accession	Q9Y4X3
Reactivity	Rat, Human, Mouse
Clonality	Monoclonal
Other Names	ALP; Ccl27; CTACK; CTAK; ILC; PESKY; SCYA27; Small inducible cytokine A27;
Isotype	Rabbit IgG
Host	Rabbit
Calculated MW	12618

Additional Information

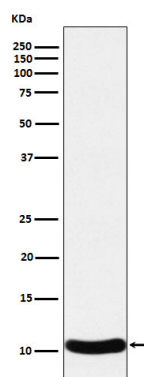
Dilution	WB 1:500~1:2000 ICC/IF 1:50~1:200 FC 1:50
Purification	Affinity-chromatography
Immunogen	A synthesized peptide derived from human CCL27
Description	Chemotactic factor that attracts skin-associated memory T-lymphocytes. May play a role in mediating homing of lymphocytes to cutaneous sites. Binds to CCR10.
Storage Condition and Buffer	Rabbit IgG in phosphate buffered saline , pH 7.4, 150mM NaCl, 0.02% sodium azide and 50% glycerol. Store at +4°C short term. Store at -20°C long term. Avoid freeze / thaw cycle.

Protein Information

Name	CCL27
Synonyms	ILC, SCYA27
Function	Chemotactic factor that attracts skin-associated memory T- lymphocytes. May play a role in mediating homing of lymphocytes to cutaneous sites. Binds to CCR10.
Cellular Location	Secreted {ECO:0000250 UniProtKB:Q9Z1X0}.
Tissue Location	Testis, thymus, placenta, ovary and skin.

Images

Western blot analysis of CCL27 expression in Human CCL27 recombinant protein cell lysate.



Please note: All products are 'FOR RESEARCH USE ONLY. NOT FOR USE IN DIAGNOSTIC OR THERAPEUTIC PROCEDURES'.