

UBE2B Antibody

Rabbit mAb

Catalog # AP92673

Product Information

Application	WB, IHC, IF, ICC, IHF
Primary Accession	P63146
Reactivity	Human
Clonality	Monoclonal
Other Names	hHR6B; HR6B; RAD6B; UBC2; UBE2B;
Isotype	Rabbit IgG
Host	Rabbit
Calculated MW	17312

Additional Information

Dilution	WB 1:500~1:2000 IHC 1:50~1:200 ICC/IF 1:50~1:200
Purification	Affinity-chromatography
Immunogen	A synthesized peptide derived from UBE2B
Description	Accepts ubiquitin from the E1 complex and catalyzes its covalent attachment to other proteins. In association with the E3 enzyme BRE1 (RNF20 and/or RNF40), it plays a role in transcription regulation by catalyzing the monoubiquitination of histone H2B at 'Lys-120' to form H2BK120ub1.
Storage Condition and Buffer	Rabbit IgG in phosphate buffered saline , pH 7.4, 150mM NaCl, 0.02% sodium azide and 50% glycerol. Store at +4°C short term. Store at -20°C long term. Avoid freeze / thaw cycle.

Protein Information

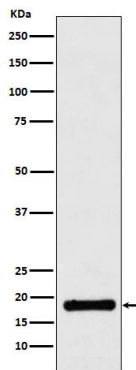
Name	UBE2B (HGNC:12473)
Function	E2 ubiquitin-conjugating enzyme that accepts ubiquitin from the ubiquitin-activating enzyme E1 and transfers it to a E3 ubiquitin- protein ligase (PubMed: 16337599 , PubMed: 17108083 , PubMed: 17130289 , PubMed: 1717990 , PubMed: 20061386). In vitro catalyzes 'Lys-11'-, as well as 'Lys-48'- and 'Lys-63'-linked polyubiquitination (PubMed: 20061386). Together with the E3 enzyme BRE1 (RNF20 and/or RNF40), plays a role in transcription regulation by catalyzing the monoubiquitination of histone H2B at 'Lys-120' to form H2BK120ub1 (PubMed: 16337599). H2BK120ub1 gives a specific tag for epigenetic transcriptional activation, elongation by RNA polymerase II, telomeric silencing, and is also a prerequisite for H3K4me and H3K79me formation (PubMed: 16337599). May play a role in DNA repair (PubMed: 8062904). Associates to the E3 ligase RAD18 to form the UBE2B-RAD18 ubiquitin ligase complex involved in mono-ubiquitination of DNA-associated PCNA on 'Lys-164' (PubMed: 17108083 , PubMed: 17130289). In association with the E3 enzyme UBR4, is involved in N-end rule-dependent

protein degradation (PubMed:[38182926](#)). May be involved in neurite outgrowth (By similarity).

Cellular Location

Cell membrane {ECO:0000250 | UniProtKB:P63149}. Nucleus {ECO:0000250 | UniProtKB:P63149}. Note=In peripheral neurons, expressed both at the plasma membrane and in nuclei {ECO:0000250 | UniProtKB:P63149}

Images



Western blot analysis of UBE2B expression in Jurkat cell lysate.

Please note: All products are 'FOR RESEARCH USE ONLY. NOT FOR USE IN DIAGNOSTIC OR THERAPEUTIC PROCEDURES'.