

CARS Antibody

Rabbit mAb

Catalog # AP92664

Product Information

Application	WB, IHC, IF, FC, ICC, IHF
Primary Accession	P49589
Reactivity	Human
Clonality	Monoclonal
Other Names	Cars; CysRS;
Isotype	Rabbit IgG
Host	Rabbit
Calculated MW	85473

Additional Information

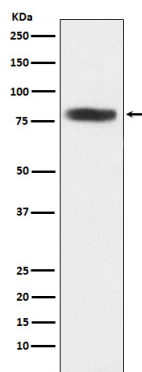
Dilution	WB 1:500~1:2000 IHC 1:50~1:200 ICC/IF 1:50~1:200 FC 1:50
Purification	Affinity-chromatography
Immunogen	A synthesized peptide derived from CARS
Description	Catalytic activity: ATP + L-cysteine + tRNA(Cys) = AMP + diphosphate + L-cysteinyl-tRNA(Cys).
Storage Condition and Buffer	Rabbit IgG in phosphate buffered saline , pH 7.4, 150mM NaCl, 0.02% sodium azide and 50% glycerol. Store at +4°C short term. Store at -20°C long term. Avoid freeze / thaw cycle.

Protein Information

Name	CARS1 (HGNC:1493)
Synonyms	CARS
Function	Catalyzes the ATP-dependent ligation of cysteine to tRNA(Cys).
Cellular Location	Cytoplasm.

Images

Western blot analysis of CARS expression in 293T cell lysate.



Please note: All products are 'FOR RESEARCH USE ONLY. NOT FOR USE IN DIAGNOSTIC OR THERAPEUTIC PROCEDURES'.