

CIRBP Antibody

Rabbit mAb

Catalog # AP92642

Product Information

| | |
|--------------------------|--|
| Application | WB, IHC, IF, ICC, IP, IHF |
| Primary Accession | Q14011 |
| Reactivity | Human |
| Clonality | Monoclonal |
| Other Names | A18HNRNP; cirbp; CIRP; Cold inducible RNA binding protein; |
| Isotype | Rabbit IgG |
| Host | Rabbit |
| Calculated MW | 18648 |

Additional Information

| | |
|-------------------------------------|---|
| Dilution | WB 1:500~1:2000 IHC 1:50~1:200 ICC/IF 1:50~1:200 IP 1:50 |
| Purification | Affinity-chromatography |
| Immunogen | A synthesized peptide derived from CIRBP |
| Description | Cold-inducible mRNA binding protein that plays a protective role in the genotoxic stress response by stabilizing transcripts of genes involved in cell survival. Acts as a translational activator. |
| Storage Condition and Buffer | Rabbit IgG in phosphate buffered saline , pH 7.4, 150mM NaCl, 0.02% sodium azide and 50% glycerol. Store at +4°C short term. Store at -20°C long term. Avoid freeze / thaw cycle. |

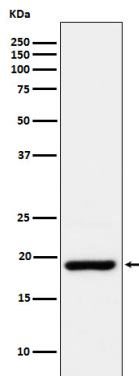
Protein Information

| | |
|--------------------------|--|
| Name | CIRBP |
| Synonyms | A18HNRNP, CIRP |
| Function | Cold-inducible mRNA binding protein that plays a protective role in the genotoxic stress response by stabilizing transcripts of genes involved in cell survival. Acts as a translational activator. Seems to play an essential role in cold-induced suppression of cell proliferation. Binds specifically to the 3'-untranslated regions (3'-UTRs) of stress-responsive transcripts RPA2 and TXN. Acts as a translational repressor (By similarity). Promotes assembly of stress granules (SGs), when overexpressed. |
| Cellular Location | Nucleus, nucleoplasm. Cytoplasm Note=Translocates from the nucleus to the cytoplasm after exposure to UV radiation. Translocates from the nucleus to the cytoplasm into stress granules upon various cytoplasmic stresses, such as osmotic and heat shocks. Its recruitment into stress granules occurs in the absence of TIAR proteins (By similarity). |

Tissue Location

Ubiquitous.

Images



Western blot analysis of CIRBP expression in HepG2 cell lysate.

Please note: All products are 'FOR RESEARCH USE ONLY. NOT FOR USE IN DIAGNOSTIC OR THERAPEUTIC PROCEDURES'.