

# p66 alpha Antibody

Rabbit mAb

Catalog # AP92637

## Product Information

---

<b>Application</b>	WB, IHC, IF, FC, ICC, IHF
<b>Primary Accession</b>	<a href="#">Q86YP4</a>
<b>Reactivity</b>	Human, Mouse
<b>Clonality</b>	Monoclonal
<b>Other Names</b>	GATAD2A; Hp66alpha; P66 alpha; p66alpha;
<b>Isotype</b>	Rabbit IgG
<b>Host</b>	Rabbit
<b>Calculated MW</b>	68063

## Additional Information

---

<b>Dilution</b>	WB 1:500~1:2000 IHC 1:50~1:200 ICC/IF 1:50~1:200 FC 1:50
<b>Purification</b>	Affinity-chromatography
<b>Immunogen</b>	A synthesized peptide derived from human p66 alpha
<b>Description</b>	Transcriptional repressor.
<b>Storage Condition and Buffer</b>	Rabbit IgG in phosphate buffered saline , pH 7.4, 150mM NaCl, 0.02% sodium azide and 50% glycerol. Store at +4°C short term. Store at -20°C long term. Avoid freeze / thaw cycle.

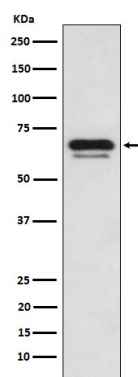
## Protein Information

---

<b>Name</b>	GATAD2A
<b>Function</b>	Transcriptional repressor (PubMed: <a href="#">12183469</a> , PubMed: <a href="#">16415179</a> ). Acts as a component of the histone deacetylase NuRD complex which participates in the remodeling of chromatin (PubMed: <a href="#">16428440</a> , PubMed: <a href="#">28977666</a> ). Enhances MBD2-mediated repression (PubMed: <a href="#">12183469</a> , PubMed: <a href="#">16415179</a> ). Efficient repression requires the presence of GATAD2B (PubMed: <a href="#">16415179</a> ).
<b>Cellular Location</b>	Nucleus speckle. Nucleus. Chromosome. Note=Speckled nuclear localization requires both CR1 and CR2 regions (PubMed:16415179). Localizes to sites of DNA damage in a manner partially dependent on ZMYND8 (PubMed:27732854).
<b>Tissue Location</b>	Ubiquitous, both in fetal and adult tissues.

## Images

---



Western blot analysis of p66 alpha expression in K562 cell lysate.

Please note: All products are 'FOR RESEARCH USE ONLY. NOT FOR USE IN DIAGNOSTIC OR THERAPEUTIC PROCEDURES'.