

Cytokeratin 12 Antibody

Rabbit mAb

Catalog # AP92635

Product Information

Application	WB, IHC, IF, ICC, IHF
Primary Accession	Q99456
Reactivity	Rat, Human, Mouse
Clonality	Monoclonal
Other Names	K12; Keratin 12; KRT12; type I cytoskeletal 12;
Isotype	Rabbit IgG
Host	Rabbit
Calculated MW	53511

Additional Information

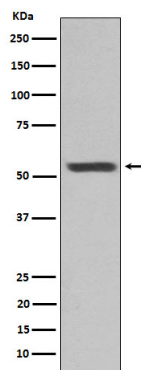
Dilution	WB 1:500~1:2000 IHC 1:50~1:200 ICC/IF 1:50~1:200
Purification	Affinity-chromatography
Immunogen	A synthesized peptide derived from human Cytokeratin 12
Description	May play a unique role in maintaining the normal corneal epithelial function. Together with KRT3, essential for the maintenance of corneal epithelium integrity.
Storage Condition and Buffer	Rabbit IgG in phosphate buffered saline , pH 7.4, 150mM NaCl, 0.02% sodium azide and 50% glycerol. Store at +4°C short term. Store at -20°C long term. Avoid freeze / thaw cycle.

Protein Information

Name	KRT12
Function	Involved in corneal epithelium organization, integrity and corneal keratin expression.
Tissue Location	Expressed in the corneal epithelium (at protein level).

Images

Western blot analysis of Cytokeratin 12 expression in mouse eyeball lysate.



Please note: All products are 'FOR RESEARCH USE ONLY. NOT FOR USE IN DIAGNOSTIC OR THERAPEUTIC PROCEDURES'.