

# CC2D1A Antibody

Rabbit mAb

Catalog # AP92634

## Product Information

<b>Application</b>	WB, IF, FC, ICC
<b>Primary Accession</b>	<a href="#">Q6P1N0</a>
<b>Reactivity</b>	Rat, Human, Mouse
<b>Clonality</b>	Monoclonal
<b>Other Names</b>	Coiled coil and C2 domain containing 1A; FREUD 1; Freud 1/Aki1; MRT3;
<b>Isotype</b>	Rabbit IgG
<b>Host</b>	Rabbit
<b>Calculated MW</b>	104062

## Additional Information

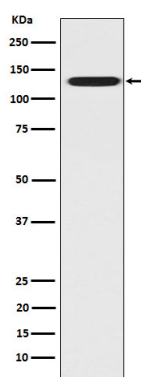
<b>Dilution</b>	WB 1:500~1:2000 ICC/IF 1:50~1:200 FC 1:50
<b>Purification</b>	Affinity-chromatography
<b>Immunogen</b>	A synthesized peptide derived from human CC2D1A
<b>Description</b>	May play a role in the altered regulation of HTR1A associated with anxiety and major depression. It also mediates HDAC-independent repression of HTR1A promoter in neuronal cell.
<b>Storage Condition and Buffer</b>	Rabbit IgG in phosphate buffered saline , pH 7.4, 150mM NaCl, 0.02% sodium azide and 50% glycerol. Store at +4°C short term. Store at -20°C long term. Avoid freeze / thaw cycle.

## Protein Information

<b>Name</b>	CC2D1A
<b>Synonyms</b>	AKI1, LGD2 {ECO:0000305}
<b>Function</b>	Transcription factor that binds specifically to the DRE (dual repressor element) and represses HTR1A gene transcription in neuronal cells. The combination of calcium and ATP specifically inactivates the binding with FRE. May play a role in the altered regulation of HTR1A associated with anxiety and major depression. Mediates HDAC-independent repression of HTR1A promoter in neuronal cell. Performs essential function in controlling functional maturation of synapses (By similarity). Plays distinct roles depending on its localization. When cytoplasmic, acts as a scaffold protein in the PI3K/PDK1/AKT pathway. Repressor of HTR1A when nuclear. In the centrosome, regulates spindle pole localization of the cohesin subunit SCC1/RAD21, thereby mediating centriole cohesion during mitosis.
<b>Cellular Location</b>	Cytoplasm. Nucleus {ECO:0000250 UniProtKB:Q66HA5}. Cytoplasm, cytoskeleton, microtubule organizing center, centrosome

## Images

---



Western blot analysis of CC2D1A expression in Hela cell lysate.

Please note: All products are 'FOR RESEARCH USE ONLY. NOT FOR USE IN DIAGNOSTIC OR THERAPEUTIC PROCEDURES'.