

CTNNA3 Antibody

Rabbit mAb

Catalog # AP92632

Product Information

Application	WB, IHC, IP
Primary Accession	Q9UI47
Reactivity	Rat, Human, Mouse
Clonality	Monoclonal
Other Names	Alpha T catenin; Cadherin associated protein; Catenin alpha 3; Catna3; CTNNA3; VR22;
Isotype	Rabbit IgG
Host	Rabbit
Calculated MW	99809

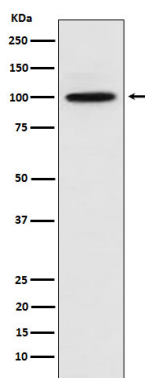
Additional Information

Dilution	WB 1:500~1:2000 IHC 1:50~1:200 IP 1:50
Purification	Affinity-chromatography
Immunogen	A synthesized peptide derived from human CTNNA3
Description	May be involved in formation of stretch-resistant cell-cell adhesion complexes.
Storage Condition and Buffer	Rabbit IgG in phosphate buffered saline , pH 7.4, 150mM NaCl, 0.02% sodium azide and 50% glycerol. Store at +4°C short term. Store at -20°C long term. Avoid freeze / thaw cycle.

Protein Information

Name	CTNNA3 {ECO:0000312 EMBL:AAF21801.1, ECO:0000312 HGNC:HGNC:2511}
Function	May be involved in formation of stretch-resistant cell-cell adhesion complexes.
Cellular Location	Cytoplasm, cytoskeleton. Cell junction, desmosome {ECO:0000250 UniProtKB:Q65CL1}. Note=Localizes to intercalated disks of cardiomyocytes and in peritubular myoid cells of testis, and colocalizes with CTNNA1 and CTNNA2. Colocalizes with PKP2 at intercalated disks in the heart (By similarity) {ECO:0000250 UniProtKB:Q65CL1, ECO:0000269 PubMed:11590244}
Tissue Location	Predominantly expressed in heart and testis. Expressed at lower levels in brain, kidney, liver and skeletal muscle

Images



Western blot analysis of CTNNA3 expression in 293 cell lysate.

Please note: All products are 'FOR RESEARCH USE ONLY. NOT FOR USE IN DIAGNOSTIC OR THERAPEUTIC PROCEDURES'.