

AP1G1 Antibody

Rabbit mAb

Catalog # AP92629

Product Information

Application	WB, IHC
Primary Accession	O43747
Reactivity	Rat, Human, Mouse
Clonality	Monoclonal
Other Names	ADTG; AP1G1; CLAPG1;
Isotype	Rabbit IgG
Host	Rabbit
Calculated MW	91351

Additional Information

Dilution	WB 1:500~1:2000 IHC 1:50~1:200
Purification	Affinity-chromatography
Immunogen	A synthesized peptide derived from human AP1G1
Description	Subunit of clathrin-associated adaptor protein complex 1 that plays a role in protein sorting in the late-Golgi/trans-Golgi network (TGN) and/or endosomes. The AP complexes mediate both the recruitment of clathrin to membranes and the recognition of sorting signals within the cytosolic tails of transmembrane cargo molecules.
Storage Condition and Buffer	Rabbit IgG in phosphate buffered saline , pH 7.4, 150mM NaCl, 0.02% sodium azide and 50% glycerol. Store at +4°C short term. Store at -20°C long term. Avoid freeze / thaw cycle.

Protein Information

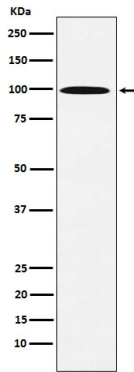
Name	AP1G1 {ECO:0000303 PubMed:34102099, ECO:0000312 HGNC:HGNC:555}
Function	Subunit of clathrin-associated adaptor protein complex 1 that plays a role in protein sorting in the late-Golgi/trans-Golgi network (TGN) and/or endosomes. The AP complexes mediate both the recruitment of clathrin to membranes and the recognition of sorting signals within the cytosolic tails of transmembrane cargo molecules. In association with AFTPH/aftiphilin in the aftiphilin/p200/gamma-synergin complex, involved in the trafficking of transferrin from early to recycling endosomes, and the membrane trafficking of furin and the lysosomal enzyme cathepsin D between the trans-Golgi network (TGN) and endosomes (PubMed: 15758025).
Cellular Location	Golgi apparatus. Cytoplasmic vesicle, clathrin-coated vesicle membrane; Peripheral membrane protein; Cytoplasmic side. Cytoplasm Cytoplasm, perinuclear region. Cytoplasmic vesicle, clathrin-coated vesicle. Membrane, clathrin-coated pit. Note=Component of the coat surrounding the cytoplasmic

face of coated vesicles located at the Golgi complex (PubMed:12773381).
Co-localizes with AFTPH/aftiphilin in the cytoplasm (PubMed:15758025).

Tissue Location

Widely expressed.

Images



Western blot analysis of AP1G1 expression in 293T cell lysate.

Please note: All products are 'FOR RESEARCH USE ONLY. NOT FOR USE IN DIAGNOSTIC OR THERAPEUTIC PROCEDURES'.