

PAG Antibody

Rabbit mAb

Catalog # AP92628

Product Information

Application	WB, IHC, FC, IP
Primary Accession	Q9NWQ8
Reactivity	Rat, Human, Mouse
Clonality	Monoclonal
Other Names	CBP; Csk binding protein; PAG; PAG1;
Isotype	Rabbit IgG
Host	Rabbit
Calculated MW	46981

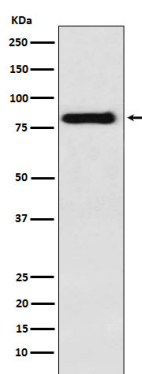
Additional Information

Dilution	WB 1:500~1:2000 IHC 1:50~1:200 IP 1:50 FC 1:100
Purification	Affinity-chromatography
Immunogen	A synthesized peptide derived from human PAG
Description	Negatively regulates TCR (T-cell antigen receptor)-mediated signaling in T-cells and FCER1 (high affinity immunoglobulin epsilon receptor)-mediated signaling in mast cells. Promotes CSK activation and recruitment to lipid rafts, which results in LCK inhibition. Inhibits immunological synapse formation by preventing dynamic arrangement of lipid raft proteins.
Storage Condition and Buffer	Rabbit IgG in phosphate buffered saline , pH 7.4, 150mM NaCl, 0.02% sodium azide and 50% glycerol. Store at +4°C short term. Store at -20°C long term. Avoid freeze / thaw cycle.

Protein Information

Name	PAG1
Synonyms	CBP, PAG
Function	Negatively regulates TCR (T-cell antigen receptor)-mediated signaling in T-cells and FCER1 (high affinity immunoglobulin epsilon receptor)-mediated signaling in mast cells. Promotes CSK activation and recruitment to lipid rafts, which results in LCK inhibition. Inhibits immunological synapse formation by preventing dynamic arrangement of lipid raft proteins. May be involved in cell adhesion signaling.
Cellular Location	Cell membrane; Single-pass type III membrane protein Note=Present in lipid rafts
Tissue Location	Ubiquitously expressed. Present in germinal center B-cells, plasma cells, T-cells, monocytes and platelets (at protein level).

Images



Western blot analysis of PAG expression in Raji cell lysate.

Please note: All products are 'FOR RESEARCH USE ONLY. NOT FOR USE IN DIAGNOSTIC OR THERAPEUTIC PROCEDURES'.