

ATP4B Antibody

Rabbit mAb

Catalog # AP92615

Product Information

Application	WB
Primary Accession	P51164
Reactivity	Human
Clonality	Monoclonal
Other Names	ATP4B; Gastric H(+)/K(+) ATPase subunit beta; Potassium-transporting ATPase subunit beta; ATPase H+/K+ exchanging beta polypeptide
Isotype	Rabbit IgG
Host	Rabbit
Calculated MW	33367

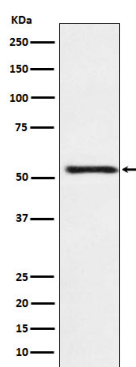
Additional Information

Dilution	WB 1:500~1:2000
Purification	Affinity-chromatography
Immunogen	A synthesized peptide derived from human ATP4B
Description	Required for stabilization and maturation of the catalytic proton pump alpha subunit and may also involved in cell adhesion and establishing epithelial cell polarity.
Storage Condition and Buffer	Rabbit IgG in phosphate buffered saline , pH 7.4, 150mM NaCl, 0.02% sodium azide and 50% glycerol. Store at +4°C short term. Store at -20°C long term. Avoid freeze / thaw cycle.

Protein Information

Name	ATP4B (HGNC:820)
Function	The beta subunit of the gastric H(+)/K(+) ATPase pump which transports H(+) ions in exchange for K(+) ions across the apical membrane of parietal cells. Plays a structural and regulatory role in the assembly and membrane targeting of a functionally active pump (By similarity). Within a transport cycle, the transfer of a H(+) ion across the membrane is coupled to ATP hydrolysis and is associated with a transient phosphorylation of the alpha subunit that shifts the pump conformation from inward-facing (E1) to outward-facing state (E2). Interacts with the phosphorylation domain of the alpha subunit and functions as a ratchet, stabilizing the lumenal-open E2 conformation and preventing the reverse reaction of the transport cycle (By similarity).
Cellular Location	Apical cell membrane {ECO:0000250 UniProtKB:P20648}; Single-pass type II membrane protein. Cell membrane {ECO:0000250 UniProtKB:P18597}; Single- pass type II membrane protein. Note=Localized in the apical canalicular membrane of parietal cells {ECO:0000250 UniProtKB:P20648}

Images



Western blot analysis of ATP4B expression in HepG2 cell lysate.

Please note: All products are 'FOR RESEARCH USE ONLY. NOT FOR USE IN DIAGNOSTIC OR THERAPEUTIC PROCEDURES'.