

# COL11A1 Antibody

Rabbit mAb

Catalog # AP92612

## Product Information

<b>Application</b>	WB
<b>Primary Accession</b>	<a href="#">P12107</a>
<b>Reactivity</b>	Human
<b>Clonality</b>	Monoclonal
<b>Other Names</b>	COL11A1; COLL6; Collagen alpha 1; collagen XI alpha 1; STL2; STL3;
<b>Isotype</b>	Rabbit IgG
<b>Host</b>	Rabbit
<b>Calculated MW</b>	181065

## Additional Information

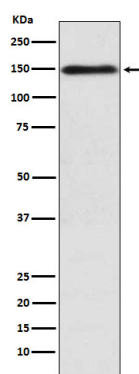
<b>Dilution</b>	WB 1:500~1:2000
<b>Purification</b>	Affinity-chromatography
<b>Immunogen</b>	A synthesized peptide derived from human COL11A1
<b>Description</b>	May play an important role in fibrillogenesis by controlling lateral growth of collagen II fibrils.
<b>Storage Condition and Buffer</b>	Rabbit IgG in phosphate buffered saline , pH 7.4, 150mM NaCl, 0.02% sodium azide and 50% glycerol. Store at +4°C short term. Store at -20°C long term. Avoid freeze / thaw cycle.

## Protein Information

<b>Name</b>	COL11A1
<b>Synonyms</b>	COLL6
<b>Function</b>	May play an important role in fibrillogenesis by controlling lateral growth of collagen II fibrils.
<b>Cellular Location</b>	Secreted, extracellular space, extracellular matrix {ECO:0000255 PROSITE-ProRule:PRU00793}
<b>Tissue Location</b>	Cartilage, placenta and some tumor or virally transformed cell lines. Isoforms using exon IIA or IIB are found in the cartilage while isoforms using only exon IIB are found in the tendon

## Images

Western blot analysis of COL11A1 expression in K562 cell



lysate.

Please note: All products are 'FOR RESEARCH USE ONLY. NOT FOR USE IN DIAGNOSTIC OR THERAPEUTIC PROCEDURES'.