

KGF Antibody

Rabbit mAb
Catalog # AP92608

Product Information

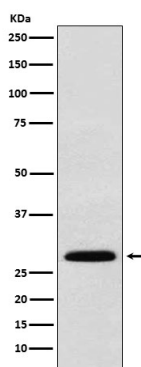
Application	WB
Primary Accession	P21781
Reactivity	Rat, Human, Mouse
Clonality	Monoclonal
Other Names	Fgf7; Fibroblast growth factor 7; HBGF7; Heparin binding growth factor 7; Keratinocyte growth factor;
Isotype	Rabbit IgG
Host	Rabbit
Calculated MW	28 KDa

Additional Information

Dilution	WB 1:500~1:2000
Purification	Affinity-chromatography
Immunogen	A synthesized peptide derived from human KGF
Description	Growth factor active on keratinocytes. Possible major paracrine effector of normal epithelial cell proliferation.
Storage Condition and Buffer	Rabbit IgG in phosphate buffered saline , pH 7.4, 150mM NaCl, 0.02% sodium azide and 50% glycerol. Store at +4°C short term. Store at -20°C long term. Avoid freeze / thaw cycle.

Protein Information

Images



Western blot analysis of KGF expression in 293T cell lysate.

Please note: All products are 'FOR RESEARCH USE ONLY. NOT FOR USE IN DIAGNOSTIC OR THERAPEUTIC PROCEDURES'.