

PDE4B Antibody

Rabbit mAb

Catalog # AP92598

Product Information

| | |
|--------------------------|---|
| Application | WB, FC |
| Primary Accession | Q07343 |
| Reactivity | Human, Mouse |
| Clonality | Monoclonal |
| Other Names | DPDE4; PDE 4B; PDE IVB; PDE32; Pde4b; PDE4B5; PDEIVB; Phosphodiesterase 4B; |
| Isotype | Rabbit IgG |
| Host | Rabbit |
| Calculated MW | 83343 |

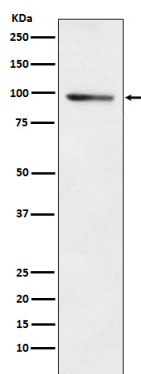
Additional Information

| | |
|-------------------------------------|---|
| Dilution | WB 1:500~1:2000 FC 1:50 |
| Purification | Affinity-chromatography |
| Immunogen | A synthesized peptide derived from human PDE4B |
| Description | Hydrolyzes the second messenger cAMP, which is a key regulator of many important physiological processes. May be involved in mediating central nervous system effects of therapeutic agents ranging from antidepressants to antiasthmatic and anti-inflammatory agents. |
| Storage Condition and Buffer | Rabbit IgG in phosphate buffered saline , pH 7.4, 150mM NaCl, 0.02% sodium azide and 50% glycerol. Store at +4°C short term. Store at -20°C long term. Avoid freeze / thaw cycle. |

Protein Information

| | |
|--------------------------|---|
| Name | PDE4B (HGNC:8781) |
| Synonyms | DPDE4 |
| Function | Hydrolyzes the second messenger cAMP, which is a key regulator of many important physiological processes (PubMed: 15260978). May be involved in mediating central nervous system effects of therapeutic agents ranging from antidepressants to antiasthmatic and anti-inflammatory agents. |
| Cellular Location | [Isoform PDE4B5]: Cytoplasm. Cell membrane |
| Tissue Location | Expressed in brain, heart, lung and skeletal muscle (PubMed:17519386). Expressed in white blood cells (PubMed:8392015) |

Images



Western blot analysis of PDE4B expression in A549 cell lysate.

Please note: All products are 'FOR RESEARCH USE ONLY. NOT FOR USE IN DIAGNOSTIC OR THERAPEUTIC PROCEDURES'.