

Placental lactogen Antibody

Rabbit mAb

Catalog # AP92589

Product Information

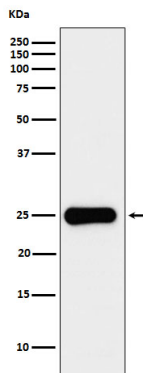
Application	WB
Primary Accession	P01243
Reactivity	Human
Clonality	Monoclonal
Other Names	CS-2; CS1; CSA; CSB; CSH1; CSH2; CSMT; hCS-B; hCSA; Lactogen; PL; PL1; Placental lactogen;
Isotype	Rabbit IgG
Host	Rabbit
Calculated MW	25 KDa

Additional Information

Dilution	WB 1:500~1:2000
Purification	Affinity-chromatography
Immunogen	A synthesized peptide derived from human Placental lactogen
Description	Produced only during pregnancy and is involved in stimulating lactation, fetal growth and metabolism. Does not interact with GHR but only activates PRLR through zinc-induced dimerization.
Storage Condition and Buffer	Rabbit IgG in phosphate buffered saline , pH 7.4, 150mM NaCl, 0.02% sodium azide and 50% glycerol. Store at +4°C short term. Store at -20°C long term. Avoid freeze / thaw cycle.

Protein Information

Images



Western blot analysis of Placental lactogen expression in JAR cell lysate.

Please note: All products are 'FOR RESEARCH USE ONLY. NOT FOR USE IN DIAGNOSTIC OR THERAPEUTIC PROCEDURES'.