

ANPRB Antibody

Rabbit mAb

Catalog # AP92581

Product Information

Application	WB
Primary Accession	P20594
Reactivity	Rat, Human, Mouse
Clonality	Monoclonal
Other Names	AMDM; ANPB; ANPRB; GCB; GUC2B; GUCY2B; Npr2; NPRB; NPRBi;
Isotype	Rabbit IgG
Host	Rabbit
Calculated MW	117022

Additional Information

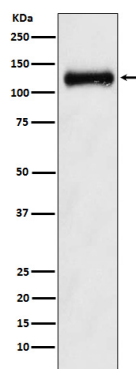
Dilution	WB 1:500~1:2000 FC 1:50
Purification	Affinity-chromatography
Immunogen	A synthesized peptide derived from human ANPRB
Description	Receptor for the C-type natriuretic peptide NPPC/CNP hormone. Has guanylate cyclase activity upon binding of its ligand. May play a role in the regulation of skeletal growth.
Storage Condition and Buffer	Rabbit IgG in phosphate buffered saline , pH 7.4, 150mM NaCl, 0.02% sodium azide and 50% glycerol. Store at +4°C short term. Store at -20°C long term. Avoid freeze / thaw cycle.

Protein Information

Name	NPR2
Synonyms	ANPRB
Function	Receptor for the C-type natriuretic peptide NPPC/CNP hormone. Has guanylate cyclase activity upon binding of its ligand. May play a role in the regulation of skeletal growth.
Cellular Location	Cell membrane; Single-pass type I membrane protein

Images

Western blot analysis of ANPRB expression in Human fetal kidney lysate.



Please note: All products are 'FOR RESEARCH USE ONLY. NOT FOR USE IN DIAGNOSTIC OR THERAPEUTIC PROCEDURES'.