

HTSF1 Antibody

Rabbit mAb

Catalog # AP92560

Product Information

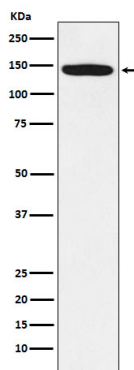
Application	WB, IHC, IF, ICC, IP, IHF
Primary Accession	O43719
Reactivity	Human, Mouse
Clonality	Monoclonal
Other Names	HTATSF1; HTSF1; TAT SF1;
Isotype	Rabbit IgG
Host	Rabbit
Calculated MW	140 KDa

Additional Information

Dilution	WB 1:500~1:2000 IHC 1:50~1:200 ICC/IF 1:50~1:200 IP 1:50
Purification	Affinity-chromatography
Immunogen	A synthesized peptide derived from human HTSF1
Description	HIV TAT specific factor(a.k.a. HTATSF1, Tat-SF1 or HTSF1) is an 86 kDa general transcription factor that plays a role in the process of transcription elongation. However, in HIV-infected cells, this factor is up-regulated by HIV Nef and gp120 and acts as a co-factor for the Tat-enhanced transcription of the HIV virus.
Storage Condition and Buffer	Rabbit IgG in phosphate buffered saline , pH 7.4, 150mM NaCl, 0.02% sodium azide and 50% glycerol. Store at +4°C short term. Store at -20°C long term. Avoid freeze / thaw cycle.

Protein Information

Images



Western blot analysis of HTSF1 expression in Jurkat cell lysate.

Please note: All products are 'FOR RESEARCH USE ONLY. NOT FOR USE IN DIAGNOSTIC OR THERAPEUTIC PROCEDURES'.