

Lgi1 Antibody

Rabbit mAb

Catalog # AP92559

Product Information

Application	WB, IHC, IP
Primary Accession	O95970
Reactivity	Rat, Human, Mouse
Clonality	Monoclonal
Other Names	ADLTE; ADPAEF; ADPEAF; Epitempin 1; EPITEMPIN; EPT; ETL1; LGI1;
Isotype	Rabbit IgG
Host	Rabbit
Calculated MW	63818

Additional Information

Dilution	WB 1:500~1:2000 IHC 1:50~1:200 IP 1:50
Purification	Affinity-chromatography
Immunogen	A synthesized peptide derived from human Lgi1
Description	Regulates voltage-gated potassium channels assembled from KCNA1, KCNA4 and KCNAB1. It slows down channel inactivation by precluding channel closure mediated by the KCNAB1 subunit. Ligand for ADAM22 that positively regulates synaptic transmission mediated by AMPA-type glutamate receptors (By similarity).
Storage Condition and Buffer	Rabbit IgG in phosphate buffered saline , pH 7.4, 150mM NaCl, 0.02% sodium azide and 50% glycerol. Store at +4°C short term. Store at -20°C long term. Avoid freeze / thaw cycle.

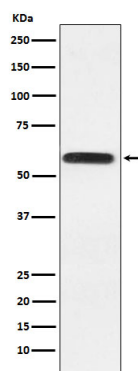
Protein Information

Name	LGI1
Synonyms	EPT
Function	Regulates voltage-gated potassium channels assembled from KCNA1, KCNA4 and KCNAB1. It slows down channel inactivation by precluding channel closure mediated by the KCNAB1 subunit. Ligand for ADAM22 that positively regulates synaptic transmission mediated by AMPA-type glutamate receptors (By similarity). Plays a role in suppressing the production of MMP1/3 through the phosphatidylinositol 3-kinase/ERK pathway. May play a role in the control of neuroblastoma cell survival.
Cellular Location	Secreted. Synapse {ECO:0000250 UniProtKB:Q8K4Y5}. Cytoplasm {ECO:0000250 UniProtKB:Q9JIA1} [Isoform 2]: Endoplasmic reticulum. Cytoplasm {ECO:0000250 UniProtKB:Q9JIA1}

Tissue Location

Predominantly expressed in neural tissues, especially in brain. Expression is reduced in low-grade brain tumors and significantly reduced or absent in malignant gliomas [Isoform 3]: Abundantly expressed in the occipital cortex and weakly expressed in the hippocampus (at protein level)

Images



Western blot analysis of Lgi1 expression in HeLa cell lysate.

Please note: All products are 'FOR RESEARCH USE ONLY. NOT FOR USE IN DIAGNOSTIC OR THERAPEUTIC PROCEDURES'.