

Alpha SNAP Antibody

Rabbit mAb

Catalog # AP92552

Product Information

Application	WB, IHC, IF, ICC, IHF
Primary Accession	P54920
Reactivity	Rat, Human, Mouse
Clonality	Monoclonal
Other Names	napA; SNAP alpha; SNAPA;
Isotype	Rabbit IgG
Host	Rabbit
Calculated MW	33233

Additional Information

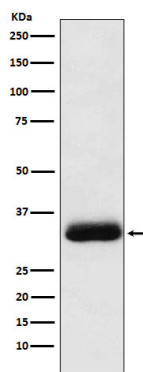
Dilution	WB 1:500~1:2000 IHC 1:50~1:200 ICC/IF 1:50~1:200
Purification	Affinity-chromatography
Immunogen	A synthesized peptide derived from human Alpha SNAP
Description	Required for vesicular transport between the endoplasmic reticulum and the Golgi apparatus.
Storage Condition and Buffer	Rabbit IgG in phosphate buffered saline , pH 7.4, 150mM NaCl, 0.02% sodium azide and 50% glycerol. Store at +4°C short term. Store at -20°C long term. Avoid freeze / thaw cycle.

Protein Information

Name	NAPA
Synonyms	SNAPA
Function	Required for vesicular transport between the endoplasmic reticulum and the Golgi apparatus (Probable). Together with GNA12 promotes CDH5 localization to plasma membrane (PubMed: 15980433).
Cellular Location	Cell membrane; Peripheral membrane protein

Images

Western blot analysis of Alpha SNAP expression in Molt4 cell lysate.



Please note: All products are 'FOR RESEARCH USE ONLY. NOT FOR USE IN DIAGNOSTIC OR THERAPEUTIC PROCEDURES'.