

APLP2 Antibody

Rabbit mAb

Catalog # AP92551

Product Information

Application	WB, IHC
Primary Accession	Q06481
Reactivity	Rat, Human, Mouse
Clonality	Monoclonal
Other Names	Aplp2; APPH; APPL2; CDEBP;
Isotype	Rabbit IgG
Host	Rabbit
Calculated MW	86956

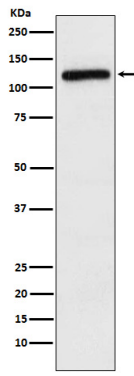
Additional Information

Dilution	WB 1:1000~1:5000 IHC 1:50~1:200
Purification	Affinity-chromatography
Immunogen	A synthesized peptide derived from human APLP2
Description	May play a role in the regulation of hemostasis. The soluble form may have inhibitory properties towards coagulation factors. May interact with cellular G-protein signaling pathways. May bind to the DNA 5'-GTCACATG-3'(CDEI box).
Storage Condition and Buffer	Rabbit IgG in phosphate buffered saline , pH 7.4, 150mM NaCl, 0.02% sodium azide and 50% glycerol. Store at +4°C short term. Store at -20°C long term. Avoid freeze / thaw cycle.

Protein Information

Name	APLP2 (HGNC:598)
Function	May play a role in the regulation of hemostasis. The soluble form may have inhibitory properties towards coagulation factors. May interact with cellular G-protein signaling pathways. May bind to the DNA 5'-GTCACATG-3'(CDEI box). Inhibits trypsin, chymotrypsin, plasmin, factor XIA and plasma and glandular kallikrein. Modulates the Cu/Zn nitric oxide-catalyzed autodegradation of GPC1 heparan sulfate side chains in fibroblasts (By similarity).
Cellular Location	Cell membrane; Single-pass type I membrane protein. Nucleus
Tissue Location	Expressed in placenta, brain, heart, lung, liver, kidney and endothelial tissues

Images



Western blot analysis of APLP2 expression in HeLa cell lysate.

Please note: All products are 'FOR RESEARCH USE ONLY. NOT FOR USE IN DIAGNOSTIC OR THERAPEUTIC PROCEDURES'.