

GUSB Antibody

Rabbit mAb

Catalog # AP92539

Product Information

Application	WB, IHC, IF, FC, ICC, IHF
Primary Accession	P08236
Reactivity	Human
Clonality	Monoclonal
Other Names	Beta-glucuronidase; Beta-G1; GUSB;
Isotype	Rabbit IgG
Host	Rabbit
Calculated MW	74732

Additional Information

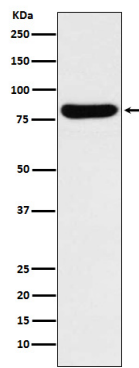
Dilution	WB 1:500~1:2000 IHC 1:50~1:200 ICC/IF 1:50~1:200 FC 1:50
Purification	Affinity-chromatography
Immunogen	A synthesized peptide derived from human GUSB
Description	Plays an important role in the degradation of dermatan and keratan sulfates.
Storage Condition and Buffer	Rabbit IgG in phosphate buffered saline , pH 7.4, 150mM NaCl, 0.02% sodium azide and 50% glycerol. Store at +4°C short term. Store at -20°C long term. Avoid freeze / thaw cycle.

Protein Information

Name	GUSB
Function	Plays an important role in the degradation of dermatan and keratan sulfates.
Cellular Location	Lysosome.

Images

Western blot analysis of GUSB expression in K562 cell lysate.



Please note: All products are 'FOR RESEARCH USE ONLY. NOT FOR USE IN DIAGNOSTIC OR THERAPEUTIC PROCEDURES'.