

SSTR5 Antibody

Rabbit mAb

Catalog # AP92507

Product Information

Application	WB, FC
Primary Accession	P35346
Reactivity	Rat, Human, Mouse
Clonality	Monoclonal
Other Names	SSTR5; SS5R; Sstr5;
Isotype	Rabbit IgG
Host	Rabbit
Calculated MW	39202

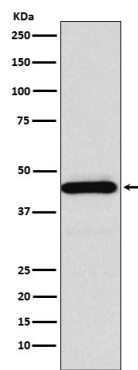
Additional Information

Dilution	WB 1:500~1:2000 FC 1:100
Purification	Affinity-chromatography
Immunogen	A synthesized peptide derived from human SSTR5
Description	Receptor for somatostatin 28 and to a lesser extent for somatostatin-14. The activity of this receptor is mediated by G proteins which inhibit adenylyl cyclase.
Storage Condition and Buffer	Rabbit IgG in phosphate buffered saline , pH 7.4, 150mM NaCl, 0.02% sodium azide and 50% glycerol. Store at +4°C short term. Store at -20°C long term. Avoid freeze / thaw cycle.

Protein Information

Name	SSTR5
Function	Receptor for somatostatin 28 and to a lesser extent for somatostatin-14. The activity of this receptor is mediated by G proteins which inhibit adenylyl cyclase. Increases cell growth inhibition activity of SSTR2 following heterodimerization.
Cellular Location	Cell membrane; Multi-pass membrane protein.
Tissue Location	Adult pituitary gland, heart, small intestine, adrenal gland, cerebellum and fetal hypothalamus. No expression in fetal or adult kidney, liver, pancreas, uterus, spleen, lung, thyroid or ovary.

Images



expression in HeLa cell lysate.

Please note: All products are 'FOR RESEARCH USE ONLY. NOT FOR USE IN DIAGNOSTIC OR THERAPEUTIC PROCEDURES'.