

ACVR2A Antibody

Rabbit mAb

Catalog # AP92504

Product Information

Application	WB
Primary Accession	P27037
Reactivity	Rat, Human, Mouse
Clonality	Monoclonal
Other Names	ACTR2; ACTRII; ACTRIIA; Acvr2; ACVR2A;
Isotype	Rabbit IgG
Host	Rabbit
Calculated MW	57848

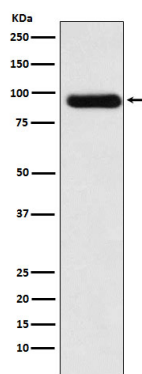
Additional Information

Dilution	WB 1:500~1:2000
Purification	Affinity-chromatography
Immunogen	A synthesized peptide derived from human ACVR2A
Description	On ligand binding, forms a receptor complex consisting of two type II and two type I transmembrane serine/threonine kinases. Type II receptors phosphorylate and activate type I receptors which autophosphorylate, then bind and activate SMAD transcriptional regulators. Receptor for activin A, activin B and inhibin A.
Storage Condition and Buffer	Rabbit IgG in phosphate buffered saline , pH 7.4, 150mM NaCl, 0.02% sodium azide and 50% glycerol. Store at +4°C short term. Store at -20°C long term. Avoid freeze / thaw cycle.

Protein Information

Name	ACVR2A (HGNC:173)
Synonyms	ACVR2
Function	On ligand binding, forms a receptor complex consisting of two type II and two type I transmembrane serine/threonine kinases. Type II receptors phosphorylate and activate type I receptors which autophosphorylate, then bind and activate SMAD transcriptional regulators. Receptor for activin A, activin B and inhibin A (PubMed: 17911401 , PubMed: 10652306). Mediates induction of adipogenesis by GDF6 (By similarity).
Cellular Location	Cell membrane {ECO:0000250 UniProtKB:P27038}; Single-pass type I membrane protein

Images



Western blot analysis of Activin Receptor Type IIA expression in HeLa cell lysate.

Please note: All products are 'FOR RESEARCH USE ONLY. NOT FOR USE IN DIAGNOSTIC OR THERAPEUTIC PROCEDURES'.