

FABPI Antibody

Rabbit mAb

Catalog # AP92499

Product Information

Application	WB
Primary Accession	P12104
Reactivity	Rat, Human, Mouse
Clonality	Monoclonal
Other Names	FABP2; FABPI; IFABP;
Isotype	Rabbit IgG
Host	Rabbit
Calculated MW	15237

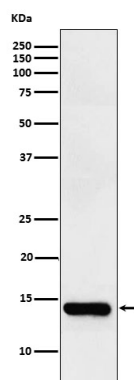
Additional Information

Dilution	WB 1:500~1:2000
Purification	Affinity-chromatography
Immunogen	A synthesized peptide derived from human FABPI
Description	FABP are thought to play a role in the intracellular transport of long-chain fatty acids and their acyl-CoA esters. FABP2 is probably involved in triglyceride-rich lipoprotein synthesis.
Storage Condition and Buffer	Rabbit IgG in phosphate buffered saline , pH 7.4, 150mM NaCl, 0.02% sodium azide and 50% glycerol. Store at +4°C short term. Store at -20°C long term. Avoid freeze / thaw cycle.

Protein Information

Name	FABP2
Synonyms	FABPI
Function	FABPs are thought to play a role in the intracellular transport of long-chain fatty acids and their acyl-CoA esters. FABP2 is probably involved in triglyceride-rich lipoprotein synthesis. Binds saturated long-chain fatty acids with a high affinity, but binds with a lower affinity to unsaturated long-chain fatty acids. FABP2 may also help maintain energy homeostasis by functioning as a lipid sensor.
Cellular Location	Cytoplasm.
Tissue Location	Expressed in the small intestine and at much lower levels in the large intestine. Highest expression levels in the jejunum.

Images



Western blot analysis of intestinal FABP expression in Human small intestine lysate.

Please note: All products are 'FOR RESEARCH USE ONLY. NOT FOR USE IN DIAGNOSTIC OR THERAPEUTIC PROCEDURES'.