

CRMP4 Antibody

Rabbit mAb

Catalog # AP92491

Product Information

Application	WB, IF, ICC, IP
Primary Accession	Q14195
Reactivity	Rat, Human, Mouse
Clonality	Monoclonal
Other Names	CRMP4; DPYSL3; DRP3; LCRMP; TUC4; ULIP1;
Isotype	Rabbit IgG
Host	Rabbit
Calculated MW	61963

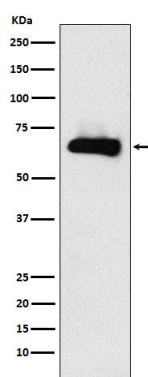
Additional Information

Dilution	WB 1:500~1:2000 ICC/IF 1:50~1:200 IP 1:50
Purification	Affinity-chromatography
Immunogen	A synthesized peptide derived from human CRMP4
Description	Necessary for signaling by class 3 semaphorins and subsequent remodeling of the cytoskeleton. Plays a role in axon guidance, neuronal growth cone collapse and cell migration.
Storage Condition and Buffer	Rabbit IgG in phosphate buffered saline , pH 7.4, 150mM NaCl, 0.02% sodium azide and 50% glycerol. Store at +4°C short term. Store at -20°C long term. Avoid freeze / thaw cycle.

Protein Information

Name	DPYSL3
Synonyms	CRMP4, DRP3, ULIP, ULIP1
Function	Necessary for signaling by class 3 semaphorins and subsequent remodeling of the cytoskeleton. Plays a role in axon guidance, neuronal growth cone collapse and cell migration (By similarity).
Cellular Location	Cytoplasm. Cell projection, growth cone. Note=Colocalizes with synaptic vesicle protein 2 in the central region of the growth cone.
Tissue Location	Mainly expressed in heart and skeletal muscle. Also strongly expressed in fetal brain and spinal cord

Images



Western blot analysis of CRMP4 expression in Human fetal brain lysate.

Please note: All products are 'FOR RESEARCH USE ONLY. NOT FOR USE IN DIAGNOSTIC OR THERAPEUTIC PROCEDURES'.