

# DBF4 Antibody

Rabbit mAb

Catalog # AP92478

## Product Information

---

|                          |  |
|--------------------------|--|
| <b>Application</b>       | WB   |
| <b>Primary Accession</b> | <a href="#">Q9UBU7</a>                             |
| <b>Reactivity</b>        | Human  |
| <b>Clonality</b>         | Monoclonal   |
| <b>Other Names</b>       | ASK; CHIF; DBF4; DBF4 zinc finger A; DBF4A; ZDBF1; |
| <b>Isotype</b>           | Rabbit IgG   |
| <b>Host</b>              | Rabbit   |
| <b>Calculated MW</b>     | 76858  |

## Additional Information

---

|                                     |  |
|-------------------------------------|--|
| <b>Dilution</b>                     | WB 1:500~1:2000  |
| <b>Purification</b>                 | Affinity-chromatography  |
| <b>Immunogen</b>                    | A synthesized peptide derived from human DBF4  |
| <b>Description</b>                  | Regulatory subunit for CDC7 which activates its kinase activity thereby playing a central role in DNA replication and cell proliferation. Required for progression of S phase. The complex CDC7-DBF4A selectively phosphorylates MCM2 subunit at 'Ser-40' and 'Ser-53' and then is involved in regulating the initiation of DNA replication during cell cycle. |
| <b>Storage Condition and Buffer</b> | Rabbit IgG in phosphate buffered saline , pH 7.4, 150mM NaCl, 0.02% sodium azide and 50% glycerol. Store at +4°C short term. Store at -20°C long term. Avoid freeze / thaw cycle.  |

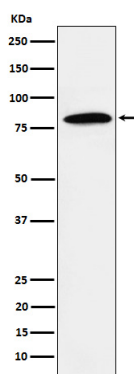
## Protein Information

---

|                          |   |
|--------------------------|---|
| <b>Name</b>              | DBF4  |
| <b>Synonyms</b>          | ASK, DBF4A, ZDBF1   |
| <b>Function</b>          | Regulatory subunit for CDC7 which activates its kinase activity thereby playing a central role in DNA replication and cell proliferation. Required for progression of S phase. The complex CDC7- DBF4A selectively phosphorylates MCM2 subunit at 'Ser-40' and 'Ser-53' and then is involved in regulating the initiation of DNA replication during cell cycle. |
| <b>Cellular Location</b> | Nucleus.  |
| <b>Tissue Location</b>   | Highly expressed in testis and thymus. Expressed also in most cancer cells lines.   |

## Images

---



Western blot analysis of DBF4 expression in Jurkat cell lysate.

Please note: All products are 'FOR RESEARCH USE ONLY. NOT FOR USE IN DIAGNOSTIC OR THERAPEUTIC PROCEDURES'.