

# Cystatin A Antibody

Rabbit mAb

Catalog # AP92474

## Product Information

---

<b>Application</b>	WB, FC
<b>Primary Accession</b>	<a href="#">P01040</a>
<b>Reactivity</b>	Rat, Human, Mouse
<b>Clonality</b>	Monoclonal
<b>Other Names</b>	AREI; cstA; Cystatin A; Cystatin AS; Stefin A; STF1; STFA;
<b>Isotype</b>	Rabbit IgG
<b>Host</b>	Rabbit
<b>Calculated MW</b>	11006

## Additional Information

---

<b>Dilution</b>	WB 1:500~1:2000 FC 1:50
<b>Purification</b>	Affinity-chromatography
<b>Immunogen</b>	A synthesized peptide derived from human Cystatin A
<b>Description</b>	This is an intracellular thiol proteinase inhibitor.
<b>Storage Condition and Buffer</b>	Rabbit IgG in phosphate buffered saline , pH 7.4, 150mM NaCl, 0.02% sodium azide and 50% glycerol. Store at +4°C short term. Store at -20°C long term. Avoid freeze / thaw cycle.

## Protein Information

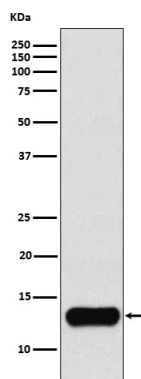
---

<b>Name</b>	CSTA
<b>Synonyms</b>	STF1, STFA
<b>Function</b>	This is an intracellular thiol proteinase inhibitor. Has an important role in desmosome-mediated cell-cell adhesion in the lower levels of the epidermis.
<b>Cellular Location</b>	Cytoplasm.
<b>Tissue Location</b>	Expressed in the skin throughout the epidermis.

## Images

---

Western blot analysis of Cystatin A expression in K562 cell lysate.



Please note: All products are 'FOR RESEARCH USE ONLY. NOT FOR USE IN DIAGNOSTIC OR THERAPEUTIC PROCEDURES'.