

Hippocalcin Antibody

Rabbit mAb

Catalog # AP92470

Product Information

Application	WB
Primary Accession	P84074
Reactivity	Rat, Human, Mouse
Clonality	Monoclonal
Other Names	BDR2; HPCA; P23K;
Isotype	Rabbit IgG
Host	Rabbit
Calculated MW	22427

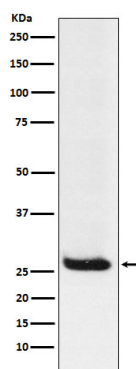
Additional Information

Dilution	WB 1:500~1:2000
Purification	Affinity-chromatography
Immunogen	A synthesized peptide derived from human Hippocalcin
Description	May be involved in the calcium-dependent regulation of rhodopsin phosphorylation. Binds two calcium ions.
Storage Condition and Buffer	Rabbit IgG in phosphate buffered saline , pH 7.4, 150mM NaCl, 0.02% sodium azide and 50% glycerol. Store at +4°C short term. Store at -20°C long term. Avoid freeze / thaw cycle.

Protein Information

Name	HPCA (HGNC:5144)
Synonyms	BDR2
Function	Calcium-binding protein that may play a role in the regulation of voltage-dependent calcium channels (PubMed: 28398555). May also play a role in cyclic-nucleotide-mediated signaling through the regulation of adenylate and guanylate cyclases (By similarity).
Cellular Location	Cytoplasm, cytosol {ECO:0000250 UniProtKB:P84076, ECO:0000269 PubMed:28398555}. Membrane {ECO:0000250 UniProtKB:P84076}; Peripheral membrane protein {ECO:0000250 UniProtKB:P84076} Note=Association with membranes is calcium-dependent (By similarity) Enriched in the perinuclear region, probably at the trans Golgi network in response to calcium (PubMed:28398555) {ECO:0000250 UniProtKB:P84076, ECO:0000269 PubMed:28398555}
Tissue Location	Brain specific..

Images



Western blot analysis of Hippocalcin expression in Neuro2a cell lysate.

Please note: All products are 'FOR RESEARCH USE ONLY. NOT FOR USE IN DIAGNOSTIC OR THERAPEUTIC PROCEDURES'.