

ApoA Antibody

Rabbit mAb

Catalog # AP92461

Product Information

Application	WB
Primary Accession	P08519
Reactivity	Human
Clonality	Monoclonal
Other Names	AK38; APOA; apolipoprotein(a); LP; lp(a); LPA;
Isotype	Rabbit IgG
Host	Rabbit
Calculated MW	226546

Additional Information

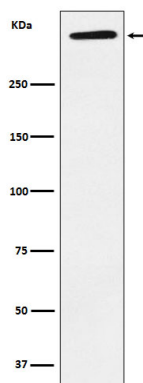
Dilution	WB 1:500~1:2000
Purification	Affinity-chromatography
Immunogen	A synthesized peptide derived from human ApoA
Description	Lipoprotein(a) (Lp(a)) is a lipoprotein subclass assembled in the blood from low density lipoprotein (LDL) molecules and apolipoprotein-a (apo-a). Lp(a) recruits inflammatory cells through interaction with Mac-1 integrin.
Storage Condition and Buffer	Rabbit IgG in phosphate buffered saline , pH 7.4, 150mM NaCl, 0.02% sodium azide and 50% glycerol. Store at +4°C short term. Store at -20°C long term. Avoid freeze / thaw cycle.

Protein Information

Name	LPA
Function	Apo(a) is the main constituent of lipoprotein(a) (Lp(a)). It has serine proteinase activity and is able of autoproteolysis. Inhibits tissue-type plasminogen activator 1. Lp(a) may be a ligand for megalin/Gp 330.

Images

Western blot analysis of ApoA expression in Human plasma lysate.



Please note: All products are 'FOR RESEARCH USE ONLY. NOT FOR USE IN DIAGNOSTIC OR THERAPEUTIC PROCEDURES'.