

# SAP97 Antibody

Rabbit mAb

Catalog # AP92460

## Product Information

---

<b>Application</b>	WB
<b>Primary Accession</b>	<a href="#">Q12959</a>
<b>Reactivity</b>	Rat, Human, Mouse
<b>Clonality</b>	Monoclonal
<b>Other Names</b>	DLG1; DLGH1; hDlg; SAP97;
<b>Isotype</b>	Rabbit IgG
<b>Host</b>	Rabbit
<b>Calculated MW</b>	100455

## Additional Information

---

<b>Dilution</b>	WB 1:500~1:2000
<b>Purification</b>	Affinity-chromatography
<b>Immunogen</b>	A synthesized peptide derived from human SAP97
<b>Description</b>	Essential multidomain scaffolding protein required for normal development (By similarity). Recruits channels, receptors and signaling molecules to discrete plasma membrane domains in polarized cells.
<b>Storage Condition and Buffer</b>	Rabbit IgG in phosphate buffered saline , pH 7.4, 150mM NaCl, 0.02% sodium azide and 50% glycerol. Store at +4°C short term. Store at -20°C long term. Avoid freeze / thaw cycle.

## Protein Information

---

<b>Name</b>	DLG1 ( <a href="#">HGNC:2900</a> )
<b>Function</b>	Essential multidomain scaffolding protein required for normal development (By similarity). Recruits channels, receptors and signaling molecules to discrete plasma membrane domains in polarized cells. Promotes epithelial cell layer barrier function via maintaining cell- cell adhesion (By similarity). May also play a role in adherens junction assembly, signal transduction, cell proliferation, synaptogenesis and lymphocyte activation. Regulates the excitability of cardiac myocytes by modulating the functional expression of Kv4 channels. Functional regulator of Kv1.5 channel. During long-term depression in hippocampal neurons, it recruits ADAM10 to the plasma membrane (PubMed: <a href="#">23676497</a> ).
<b>Cellular Location</b>	Cell membrane; Peripheral membrane protein. Basolateral cell membrane. Endoplasmic reticulum membrane {ECO:0000250 UniProtKB:Q62696}. Postsynaptic density {ECO:0000250 UniProtKB:Q62696}. Synapse {ECO:0000250 UniProtKB:Q62696} Cell membrane, sarcolemma. Apical cell membrane. Cell junction. Cytoplasm Note=Colocalizes with EPB41 at regions

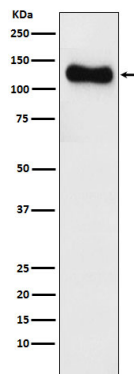
of intercellular contacts Basolateral in epithelial cells (PubMed:12807908). May also associate with endoplasmic reticulum membranes. Mainly found in neurons soma, moderately found at postsynaptic densities (By similarity) {ECO:0000250|UniProtKB:Q62696, ECO:0000269|PubMed:10859302, ECO:0000269|PubMed:12807908, ECO:0000269|PubMed:8922391, ECO:0000269|PubMed:9192623}

### Tissue Location

Abundantly expressed in atrial myocardium (at protein level). Expressed in lung fibroblasts, cervical epithelial and B-cells (at protein level). Expressed in the brain (at protein level) (PubMed:23676497). Widely expressed, with isoforms displaying different expression profiles.

### Images

---



Western blot analysis of SAP97 expression in SH-SY5Y cell lysate.

Please note: All products are 'FOR RESEARCH USE ONLY. NOT FOR USE IN DIAGNOSTIC OR THERAPEUTIC PROCEDURES'.