

CLPP Antibody

Rabbit mAb

Catalog # AP92459

Product Information

Application	WB, IHC, IP
Primary Accession	Q16740
Reactivity	Rat, Human, Mouse
Clonality	Monoclonal
Other Names	Endopeptidase Clp;
Isotype	Rabbit IgG
Host	Rabbit
Calculated MW	30180

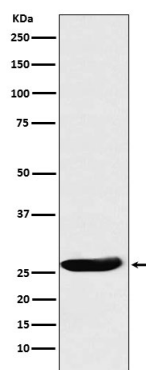
Additional Information

Dilution	WB 1:500~1:2000 IHC 1:50~1:200 IP 1:50
Purification	Affinity-chromatography
Immunogen	A synthesized peptide derived from human CLPP
Description	Clp cleaves peptides in various proteins in a process that requires ATP hydrolysis. Clp may be responsible for a fairly general and central housekeeping function rather than for the degradation of specific substrates.
Storage Condition and Buffer	Rabbit IgG in phosphate buffered saline , pH 7.4, 150mM NaCl, 0.02% sodium azide and 50% glycerol. Store at +4°C short term. Store at -20°C long term. Avoid freeze / thaw cycle.

Protein Information

Name	CLPP (HGNC:2084)
Function	Protease component of the ClpXP complex that cleaves peptides and various proteins in an ATP-dependent process. Has low peptidase activity in the absence of CLPX. The ClpXP complex can degrade CSN1S1, CSN2 and CSN3, as well as synthetic peptides (in vitro) and may be responsible for a fairly general and central housekeeping function rather than for the degradation of specific substrates (PubMed: 11923310 , PubMed: 15522782). Cleaves PINK1 in the mitochondrion (PubMed: 22354088).
Cellular Location	Mitochondrion matrix
Tissue Location	Detected in liver (at protein level). Predominantly expressed in skeletal muscle. Intermediate levels in heart, liver and pancreas. Low in brain, placenta, lung and kidney

Images



Western blot analysis of CLPP expression in A431 cell lysate.

Please note: All products are 'FOR RESEARCH USE ONLY. NOT FOR USE IN DIAGNOSTIC OR THERAPEUTIC PROCEDURES'.