

Olig1 Antibody

Rabbit mAb

Catalog # AP92453

Product Information

Application	WB, FC
Primary Accession	Q8TAK6
Reactivity	Rat, Human, Mouse
Clonality	Monoclonal
Other Names	BHLH B6; BHLHB 6; bHLHb6; bHLHe21; Olig1; Oligo1;
Isotype	Rabbit IgG
Host	Rabbit
Calculated MW	27905

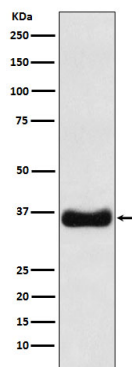
Additional Information

Dilution	WB 1:500~1:2000 FC 1:50
Purification	Affinity-chromatography
Immunogen	A synthesized peptide derived from human Olig1
Description	Promotes formation and maturation of oligodendrocytes, especially within the brain. Cooperates with OLIG2 to establish the pMN domain of the embryonic neural tube.
Storage Condition and Buffer	Rabbit IgG in phosphate buffered saline , pH 7.4, 150mM NaCl, 0.02% sodium azide and 50% glycerol. Store at +4°C short term. Store at -20°C long term. Avoid freeze / thaw cycle.

Protein Information

Name	OLIG1
Synonyms	BHLHB6, BHLHE21
Function	Promotes formation and maturation of oligodendrocytes, especially within the brain. Cooperates with OLIG2 to establish the pMN domain of the embryonic neural tube (By similarity).
Cellular Location	Nucleus {ECO:0000255 PROSITE-ProRule:PRU00981}.
Tissue Location	Expressed in the brain, in oligodendrocytes. Strongly expressed in oligodendrogliomas, while expression is weak to moderate in astrocytomas. Expression in glioblastomas is highly variable.

Images



Western blot analysis of Olig1 expression in MOLT4 cell lysate.

Please note: All products are 'FOR RESEARCH USE ONLY. NOT FOR USE IN DIAGNOSTIC OR THERAPEUTIC PROCEDURES'.