

IMP2 Antibody

Rabbit mAb

Catalog # AP92450

Product Information

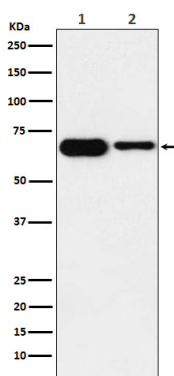
Application	WB, IHC, IF, ICC, IHF
Primary Accession	Q9Y6M1
Reactivity	Rat, Human, Mouse
Clonality	Monoclonal
Other Names	gf2bp2; IMP2; p62; VICKZ2;
Isotype	Rabbit IgG
Host	Rabbit
Calculated MW	66 KDa

Additional Information

Dilution	WB 1:500~1:2000 IHC 1:50~1:200 ICC/IF 1:50~1:200
Purification	Affinity-chromatography
Immunogen	A synthesized peptide derived from human IMP2
Description	Binds to the 5'-UTR of the insulin-like growth factor 2 (IGF2) mRNAs. Binding is isoform-specific. May regulate translation of target mRNAs.
Storage Condition and Buffer	Rabbit IgG in phosphate buffered saline , pH 7.4, 150mM NaCl, 0.02% sodium azide and 50% glycerol. Store at +4°C short term. Store at -20°C long term. Avoid freeze / thaw cycle.

Protein Information

Images



Western blot analysis of IMP2 expression in (1) SH-SY5Y cell lysate; (2) Mouse heart lysate.