

# FRA2 Antibody

Rabbit mAb

Catalog # AP92448

## Product Information

---

<b>Application</b>	WB, FC, IP
<b>Primary Accession</b>	<a href="#">P15408</a>
<b>Reactivity</b>	Rat, Human, Mouse
<b>Clonality</b>	Monoclonal
<b>Other Names</b>	Fos L2; Fosl2; FRA 2;
<b>Isotype</b>	Rabbit IgG
<b>Host</b>	Rabbit
<b>Calculated MW</b>	35193

## Additional Information

---

<b>Dilution</b>	WB 1:500~1:2000 IP 1:50 FC 1:100
<b>Purification</b>	Affinity-chromatography
<b>Immunogen</b>	A synthesized peptide derived from human FRA2
<b>Description</b>	Controls osteoclast survival and size (By similarity). As a dimer with JUN, activates LIF transcription (By similarity). Activates CEBPB transcription in PGE2-activated osteoblasts.
<b>Storage Condition and Buffer</b>	Rabbit IgG in phosphate buffered saline , pH 7.4, 150mM NaCl, 0.02% sodium azide and 50% glycerol. Store at +4°C short term. Store at -20°C long term. Avoid freeze / thaw cycle.

## Protein Information

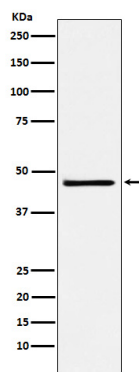
---

<b>Name</b>	FOSL2
<b>Synonyms</b>	FRA2
<b>Function</b>	Controls osteoclast survival and size (By similarity). As a dimer with JUN, activates LIF transcription (By similarity). Activates CEBPB transcription in PGE2-activated osteoblasts (By similarity).
<b>Cellular Location</b>	Nucleus {ECO:0000250 UniProtKB:P51145}.

## Images

---

Western blot analysis of FRA2 expression in NCCIT cell lysate.



Please note: All products are 'FOR RESEARCH USE ONLY. NOT FOR USE IN DIAGNOSTIC OR THERAPEUTIC PROCEDURES'.