

FOXF1 Antibody

Rabbit mAb

Catalog # AP92431

Product Information

Application	WB, IF, FC, ICC
Primary Accession	Q12946
Reactivity	Human
Clonality	Monoclonal
Other Names	FKHL5; foxf1; FREAC1; HFH 8;
Isotype	Rabbit IgG
Host	Rabbit
Calculated MW	40122

Additional Information

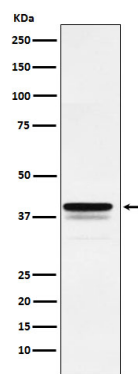
Dilution	WB 1:500~1:2000 ICC/IF 1:50~1:200 FC 1:100
Purification	Affinity-chromatography
Immunogen	A synthesized peptide derived from human FOXF1
Description	Probable transcription activator for a number of lung-specific genes.
Storage Condition and Buffer	Rabbit IgG in phosphate buffered saline , pH 7.4, 150mM NaCl, 0.02% sodium azide and 50% glycerol. Store at +4°C short term. Store at -20°C long term. Avoid freeze / thaw cycle.

Protein Information

Name	FOXF1
Synonyms	FKHL5, FREAC1
Function	Probable transcription activator for a number of lung- specific genes.
Cellular Location	Nucleus.
Tissue Location	Expressed in lung and placenta.

Images

Western blot analysis of FOXF1 expression in HeLa cell lysate.



Please note: All products are 'FOR RESEARCH USE ONLY. NOT FOR USE IN DIAGNOSTIC OR THERAPEUTIC PROCEDURES'.